



Way of Life!



ACCESSORIES

V-STROM 1000 ABS





V-Strom 1000
ABS

TOURING AND COMFORT: GOODBYE HEADWIND.

1 | TOURING SCREEN

Approx. 50mm higher wind screen.
Reduces air pressure when driving thus increasing riding comfort even for taller riders. Wind screen is adjustable in three different angles and mountable in three different heights.

**Light smoke, Polycarbonate
WVTA homologation**

V-Strom 1000, from model year 2014

48400-31810-000

V-Strom 1000 ABS

COMFORT AND EQUIPMENT: ESSENTIALS TO GO.



2

2 | KNUCKLE GUARDS

Protect your hands against wind, weather and branches with one of the most essential genuine accessory items on your new V-Strom 1000.

**Black grained
WVTA homologation**

V-Strom 1000, from model year 2014

57300-31850-291



4

4 | GRIP HEATERS

There is no such thing as bad weather once you have the best possible equipment. No matter how chilly it may be, these grip heaters will keep your fingers warm as long as you may ride. The grip heaters have five different heat settings with a max. power consumption of 17.2 watt.

V-Strom 1000, from model year 2014

57100-31840-000

3 | MIRROR EXTENSION

Taller riders will benefit from differently mounted rear view mirrors when riding. 51mm higher mirror position, adjustable up to 40mm sideways.

**Set of two
WVTA homologation**

V-Strom 1000, from model year 2014

990D0-11JME-010



3

5 | UNIVERSAL NAVIGATION BRACKET

Quick release navigation bracket. Compatible with several motorcycle navigation systems. For detailed information please ask your local Suzuki partner.

V-Strom 1000, from model year 2014

990D0-08JNB-000





V-Strom 1000
ABS

STYLE AND PROTECTION: BE PREPARED.



6 | LED FOG LAMP SET

Suzuki and PIAA have jointly developed these fog lamps to incorporate LED technology for better illumination. Includes installation kit for mounting on accessory bar. 2 LED elements inside a high-tech reflector with 11 watt and 4,400 Candela light output per lamp. Supplied with switch and wiring harness. Accessory bar required for installation.

Set of two
WVTA homologation

V-Strom 1000, from model year 2014

99000-990D2-SET

7 | LED TURNING LIGHT SET

High-tech LED turning lights. Set of two front and two rear turning lights. Including relay and exclusive bracket. Eight bright LED's per turning light with power consumption of 1.2 watt per turning light.

WVTA homologation

V-Strom 1000, from model year 2014

99000-99008-100



8 | ENGINE UNDER COWLING

Give your bike a unique look with this stylish cowl.

Black grained with aluminium insets WVTA homologation

V-Strom 1000, from model year 2014

94400-31860-000

9 | ALUMINIUM SKID PLATE

2mm thick aluminium skid plate with engraved V-Strom logo to emphasize the offroad look of your V-Strom 1000.

Matt black powder-coated/ silver aluminium WVTA homologation

V-Strom 1000, from model year 2014

990D0-31J00-035

10 | ACCESSORY BAR

No adventure touring bike can go without this stylish accessory bar. Accentuates the unique touring look. Required for installation of LED fog lamps.

Matt black powder-coated WVTA homologation

V-Strom 1000, from model year 2014

990D0-31J00-030



V-Strom 1000

ABS

STYLE AND COMFORT: HAVE A SEAT AND MORE.

11 | ALUMINIUM CHAIN GUARD¹

This alternative chain guard underlines the real adventure image of your new V-Strom 1000.

Matt black powder-coated/silver aluminium
WVTA homologation

V-Strom 1000, from model year 2014

990D0-31J10-ALU



12 | CENTER STAND

A useful accessory to bring your V-Strom 1000 to a safe and stable standing position. Improves access to your bike for standard maintenance activities.

Black powder-coated
WVTA homologation

V-Strom 1000, from model year 2014

42100-31810-000



13 | SIDE STAND EXTENSION PLATE

Adds stability when parked on soft or uneven ground.

Aluminium/Stainless steel
WVTA homologation

V-Strom 1000, from model year 2014

990D0-31J20-000



¹Only for European countries.



14

14 | LOW SEAT

This seat is approx. 30mm lower than the standard seat and gives a safer standing position for smaller riders. Easily replaces the standard seat.

grey/grey

V-Strom 1000,
from model year 2014

45100-31J50-AR8

khaki/grey (without illustration)

V-Strom 1000,
from model year 2014

45100-31J50-AT3



15

15 | HIGH SEAT

This seat is approx. 35mm higher than the standard seat – very comfortable for taller riders. Easily replaces the standard seat.

grey/grey

V-Strom 1000,
from model year 2014

45100-31J60-AR8

khaki/grey (without illustration)

V-Strom 1000,
from model year 2014

45100-31J60-AT3

V-Strom 1000

ABS

PROTECTION AND DESIGN: KEEP YOUR BIKE UNDERCOVER.



16

16 | FRONT DECOR STICKER KIT

Matt silver stickers for the front of the Suzuki V-Strom 1000.

V-Strom 1000, from model year 2014

990D0-31J06-PAD



17

17 | SIDE DECOR STICKER KIT

Customize your Suzuki V-Strom 1000 with this sticker set.

V-Strom 1000, from model year 2014

990D0-31J07-PAD



18

18 | RIM DECALS

Customize the bike's appearance with these wheel decors with V-Strom Logo.

Set front wheel

V-Strom 1000, from model year 2014

990D0-31JF5-PAD

Set rear wheel

V-Strom 1000, from model year 2014

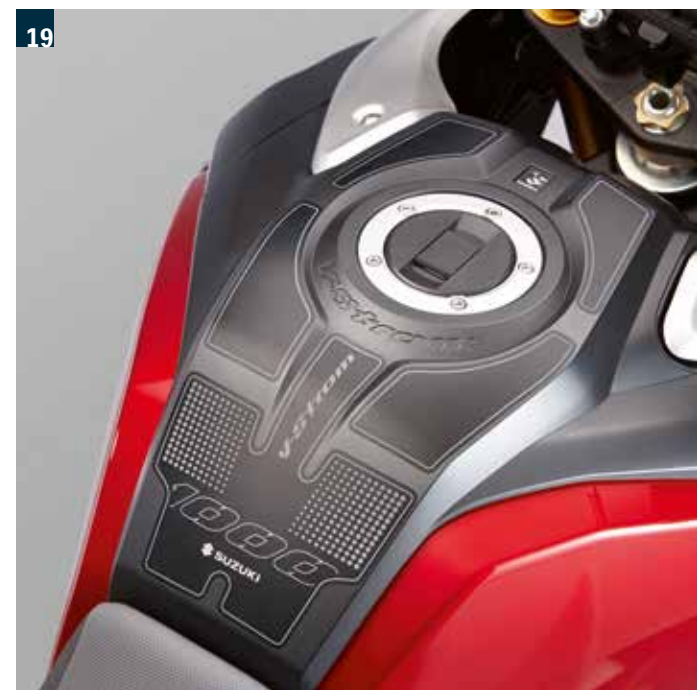
990D0-31JR5-PAD

19 | TANKPAD

Made of black grained stone chip protection foil, protects against scratches.

V-Strom 1000, from model year 2014

990D0-31JTP-000



19



20
21

20 | TANK PROTECTION FOIL BLACK

Black grained stone chip protection foil to protect the tank against scratches in the area of your knees.

Set of two

V-Strom 1000, from model year 2014

990D0-31J02-PAD



21 | TANK PROTECTION FOIL CLEAR

Transparent stone chip protection foil which is almost invisible. For protection of tank against scratches in the area of your knees.

Set of two

V-Strom 1000, from model year 2014

990D0-31J03-PAD

22 | LOWER TANK PROTECTION STICKER

Black grained stone chip protection foil to protect the side cover in the area of your knees against scratches.

Set of two

V-Strom 1000, from model year 2014

990D0-31J04-PAD



22



23

23 | FRAME PROTECTION STICKER

Black grained stone chip protection foil to protect against scratches from your boots.

Set of two

V-Strom 1000, from model year 2014

990D0-31J01-PAD





V-Strom 1000

ABS

TOURING AND LUGGAGE: EXCLUSIVE EQUIPMENT.

24 | TOP CASE SET 35 LITRES

Carrying luggage with aluminium panel and 35 litre capacity. One key operation for both motorbike and luggage locks. Complete set for mounting on your V-Strom 1000, includes adapter plate. Max. load 5kg, max. speed 130km/h.

WVTA homologation

V-Strom 1000, from model year 2014

990D0-31JTC-SET

24



25 | SIDE CASE SET RH + LH

Side case set with aluminium panel and 26 litre capacity (right hand side) and 29 litre capacity (left hand side). One key operation for both motorbike and luggage locks. Complete set for mounting on your V-Strom 1000. Max. load 5kg per case, max. speed 130km/h.

WVTA homologation

V-Strom 1000, from model year 2014

990D0-31JSC-SET

25



V-Strom 1000

ABS

TOURING AND LUGGAGE: GET MORE ON TOP.



26 | TANK BAG LARGE – FOR RING FIXATION

Durable nylon material with reflective piping, volume 11 litres expandable to 15 litres, rain cover and shoulder belt included. Mounting adapter to avoid scratches is included. Please order together with ring fixation for tank bags (990D0-04100-000). Max. load 2.5kg.

V-Strom 1000, from model year 2014
990D0-04600-SET



27 | TANK BAG SMALL – FOR RING FIXATION

Durable nylon material with reflective piping, volume 5 litres expandable to 9 litres, rain cover and shoulder belt included. Please order together with ring fixation for tank bags (990D0-04100-000). Max. load 2.5kg.

V-Strom 1000, from model year 2014
990D0-04300-000



28 | MAP CASE FOR TANK BAGS

Map case with transparent top.
Useful add-on for your tank bag.
990D0-04605-000

29 | RING FIXATION FOR TANK BAGS

V-Strom 1000, from model year 2014
990D0-04100-000





30 | OUTDOOR BIKE COVER WITH V-STROM LOGO

Durable weather proof bike cover made out of breathable material which protects your bike from rain, dust and bird droppings when not in use.

990D0-31JRC-000

31 | INDOOR BIKE COVER WITH V-STROM LOGO

Dust proof and breathable indoor cover for your Suzuki V-Strom.

990D0-31JIC-000

30



31



32



32 | ALARM UNIT¹

Protect your bike from unwanted access. This alarm system includes an approved immobilizer. The compact system is self-sustaining and cannot be disabled even when the main power source is cut. Only to be mounted with wiring harness (990D0-31J00-ALM), supplied with two remote control units.

990D0-ALARM-001

ALARM HARNESS

Wiring harness for the alarm system of the new V-Strom.

990D0-31J00-ALM

¹Only for European countries.

33



33 | VALVE CAPS WITH SUZUKI LOGO

Set of two

990D0-19069-000

WHAT ELSE? THE USEFUL MUST-HAVES.

1



1 | V-STROM 1000 T-SHIRT
Black T-Shirt in V-Strom 1000 design
with white print, 100% Cotton.
Available sizes: S-3XL
990F0-DLTS2-size

2



2 | V-STROM 1000 CAP
Black cap with embroidered logo,
100% Cotton.
One size fits all
990F0-DLCP1-000

3



3 | V-STROM 1000 KEY RING
Black/white, PVC
990F0-DLKE1-KEY

4



4 | V-STROM 1000 MUG
Black/white design with
V-Strom 1000 logo, ceramic,
suitable for microwave and
dishwasher.
990F0-DLMG1-000





5 | RAINSUIT (ONE PIECE)

Black with signal-yellow and grey details, Suzuki logo on the chest, with reflective piping, easy-on diagonal labyrinth zipper, zips & velcro at ankles, elasticated waist, waterproof, windproof, outer material 100% Polyamide, inner material 100% Polyester.

Available sizes: S-3XL
990F0-STER1-size



6 | TEXTILE TOURING JACKET

- Outer shell: 500D Polyamide, DYNAX reinforced over shoulders and elbows
- Shoulder and elbow protectors, elbow protectors height-adjustable
- Back protector
- High-grade Z-Liner membrane, waterproof, windproof and breathable
- Air control system in front and rear
- Removable TAFFETA lining – light and warm

Available sizes: XS-3XL
Black/grey
990F0-STEX1-size

7 | TEXTILE TOURING PANTS

- Outer shell: 500D Polyamide, DYNAX reinforced over the knees
- Knee protectors, height-adjustable
- High-grade Z-Liner membrane, waterproof, windproof and breathable
- Air control system in front
- Removable TAFFETA lining – light and warm

Available sizes: XS-4XL
Black
990F0-STEX4-size

8 | ENDURO TEXTILE PANTS

- Outer shell: 500D Polyamide, DYNAX reinforced over the knees
- Double safety stitching
- Knee protectors, height-adjustable
- Detachable high-grade Z-Liner membrane inner-pants, waterproof, windproof and breathable
- 2 large, zipped air control systems on upper leg

Available sizes: S-4XL
Black/grey
990F0-XTEX2-size

9 | ENDURO TEXTILE JACKET

- Outer shell: 500D Polyamide, DYNAX reinforced over shoulders and elbows
- Double safety stitching
- Shoulder and elbow protectors, elbow protectors height-adjustable
- Back protector
- Detachable high-grade Z-Liner membrane inner-jacket, waterproof, windproof and breathable
- 7 large, zipped air control systems in arm, front and rear

Available sizes: S-3XL
Black/grey
990F0-XTEX1-size



10



10 | RIDER'S REFLECTIVE VEST

Sleeveless motorcycle vest with a zipper in signal-yellow with reflective stripes on the sides, reflective Suzuki logo on the chest as well as on the back, snug fit because of 10% Elastane prevents flapping, 90% Polyester, 10% Elastane.

Available sizes: S/L/XXL
990F0-STEV1-size

11



11 | NECK WARMER

- Warm, soft and breathable
- Covers neck and shoulders
- Double-layer neck (polo neck)
- 95% Cotton, 5% Elastane

One size fits all
Black
990F0-SNECK-000



12 | SERVICE STAND

Rear wheel service stand including bobbin set for swing arm.

990D0-STAND-015

13 | REPLACEMENT BOBBINS SET FOR SWINGARM

990D0-STAND-SET

14 | SPECIAL TOOL FOR MAINTENANCE

Tool for front axle. 19/24mm

990D0-TOOL1-924



12

13



14

16 | FIRST AID KIT

Compulsory in several European countries. Please check local requirements before starting your trip.

Kit with safety vest

990D0-FIRST-KIT

Kit without safety vest

990D0-FIRST-AID

16



15 | BATTERY CHARGER

Perfect battery maintenance and care. Fully automatic battery charger with diagnosis function and overcharge protection. Connector cable with rings for permanent installation to motorcycle/scooter battery included. Input voltage 220-240V, battery voltage 12V, output current max. 0.6A.

990D0-OPTI1-3PL

OPTIONAL CONNECTOR CABLE WITH RINGS

Additional separate charging cable for permanent mounting. Ideal if you own more than one Suzuki motorcycle/scooter.

990D0-OPTI1-CAB

15



GENUINE SUZUKI SPARE PARTS

What makes your Suzuki so unique is that all parts and components are perfectly aligned. Uncompromising quality is the top priority within the development process of Genuine Suzuki Spare Parts.

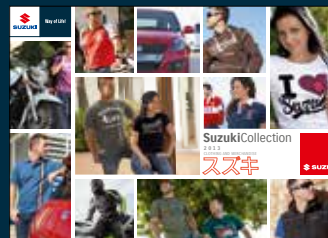
Choosing the right material, strictly keeping to defined specifications and an accurate production process guarantee a maximum of power at the lowest possible weight. Cost and quality go hand in hand.

Make sure your Suzuki remains a true Suzuki.



GET YOUR CATALOGUE NOW!

You want the perfect outfit, not only for your bike, but for yourself as well? No problem: ask for the clothing and merchandising catalogue "Suzuki Collection" at your Suzuki Partner now.



SUZUKI IS MORE THAN MOTORBIKE.

Automobile, motorbike and marine – 100 years of innovation. Visit our homepage via QR-code and learn more about Suzuki – way of life.



LUGGAGE, TANK BAG AND LED FOG LAMP SET

Set	Part	
LED FOG LAMP SET 99000-990D2-SET	LED FOG LAMPS FOG LAMP CLAMPS FOG LAMP SHROUDS	99000-990D2-200 990D0-31J35-000 990D0-31J30-000
TANK BAG LARGE – FOR RING FIXATION SET 990D0-04600-SET	TANK BAG LARGE – FOR RING FIXATION MOUNTING ADAPTER FOR TANK BAG LARGE	990D0-04600-000 990D0-04610-000
SIDE CASE SET RH + LH COMPLETE 990D0-31JSC-SET	SIDE CASE SET RH + LH SIDE CASE UPPER BRACKETS SIDE CASE LOWER BRACKETS	990D0-31JSC-000 990D0-31J00-065 990D0-31J00-066
TOP CASE SET 35 LITRES 990D0-31JTC-SET	TOP CASE 35 LITRES TOP CASE ADAPTER PLATE	990D0-TC25L-000 990D0-TC25L-060

Suzuki accessories are designed specifically for Suzuki vehicles and are subjected to the same quality standards as the vehicles themselves. We would like to draw your specific attention to the fact that only Suzuki original accessories are tested and approved by Suzuki. The requirements they have to meet are set out in the relevant manuals. Under certain circumstances, the installation and/or usage of other accessory parts may therefore have a negative impact on the characteristics of your vehicle as set out in the design specifications, thereby impairing riding safety. Suzuki cannot under any circumstances be made liable for damage occurring from the use of any accessory that is not a Suzuki original accessory. Please always check and ensure that all requirements in your country are fulfilled.

Subject to engineering and design modifications without prior notice. Please consult the current price list for details of accessory prices.

WVTA – The EC Whole Vehicle Type-Approval (EC WVTA) is a mandatory system that applies to passenger cars and motorcycles. The WVTA ensures that these vehicles (and their trailers) comply with all the relevant EC directives on safety and environmental requirements. It also confirms that adequate arrangements for ensuring conformity of production have been taken by the manufacturer and, where necessary, testing has been undertaken.

WVTA's and type-approvals of individual systems, components and separate technical units are communicated amongst member states. In effect, any item included in the WVTA does not require additional certification.

Your Suzuki partner:

Suzuki International Europe GmbH,
Suzuki Allee 7, 64625 Bensheim

Details of many more genuine
accessories and other extras can
be found at: www.suzuki.eu



Way of Life!