

**SUZUKI**



**PARTS CATALOGUE**

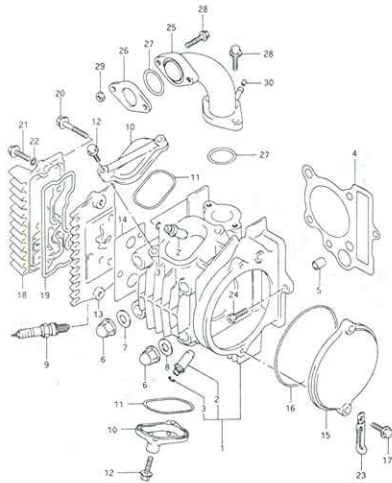
1996

GSX110

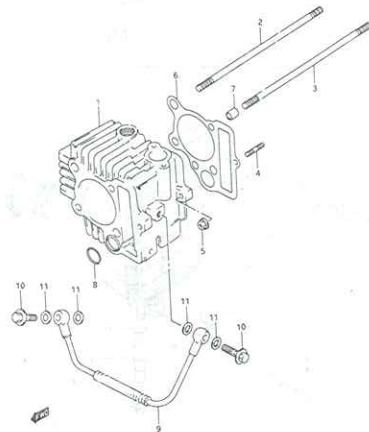


PHOTO : GSX110

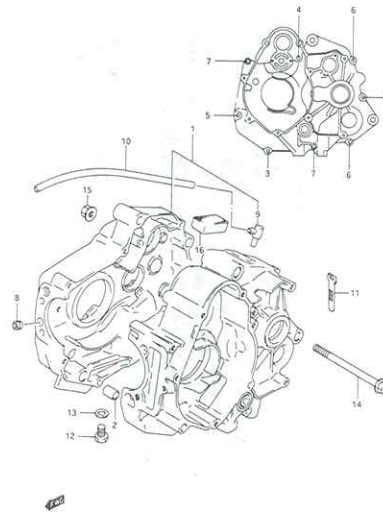
**FIG.1 (B-2) CYLINDER HEAD**



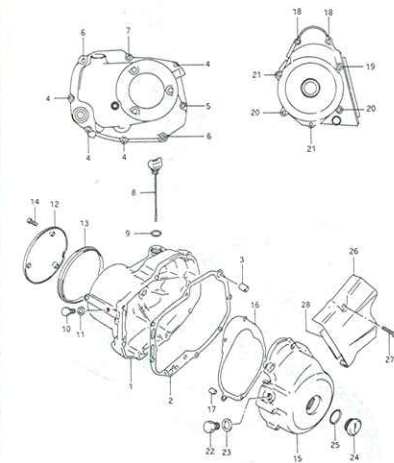
**FIG.2 (B-3) CYLINDER**



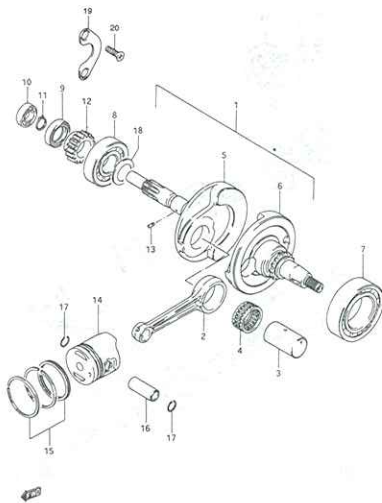
**FIG.3 (B-4) CRANKCASE**



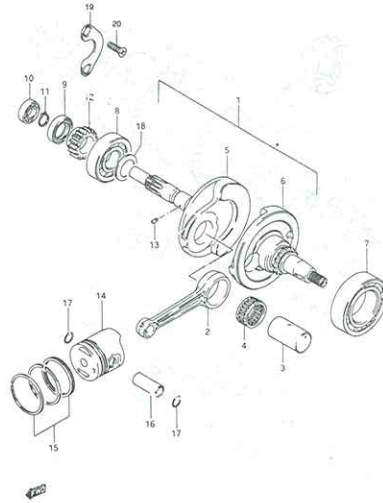
**FIG.4 (B-5) CRANKCASE COVER**



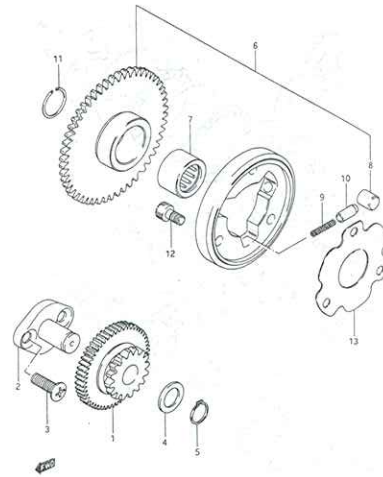
**FIG.5 (B-6) CRANKSHAFT**



**FIG.5 (B-7) CRANKSHAFT**



**FIG.6 (B-8) STARTER CLUTCH**



**FIG.7 (B-9) CAM SHAFT/VALVE**

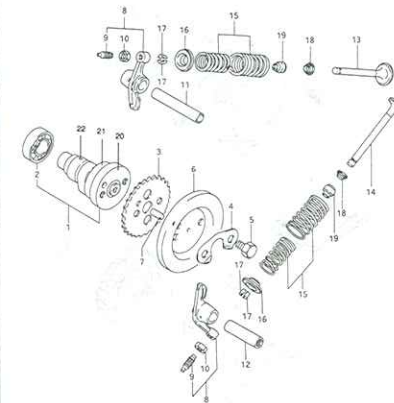


FIG.8 (B-10) CAM CHAIN

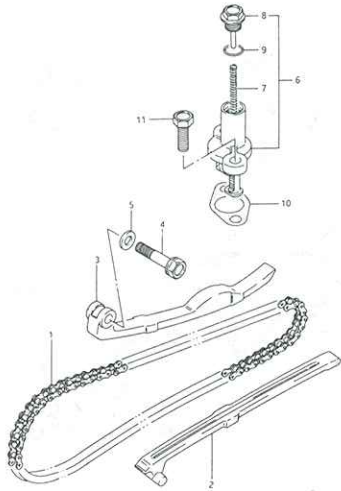


FIG.9 (C-2) CARBURETOR

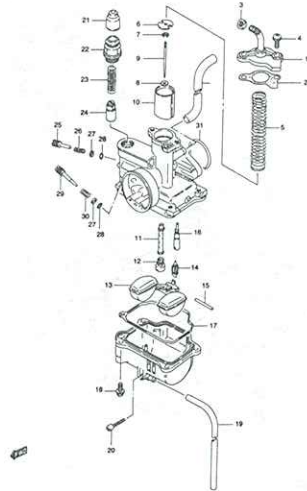


FIG.10 (C-3) AIR CLEANER

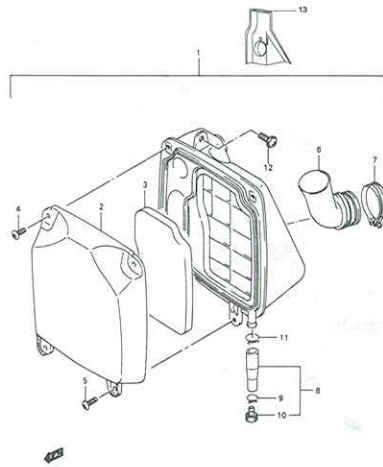


FIG.11 (C-4) MUFFLER

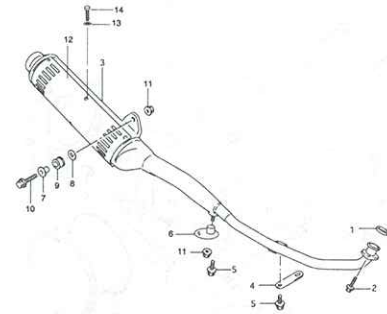


FIG.12 (C-5) OIL PUMP

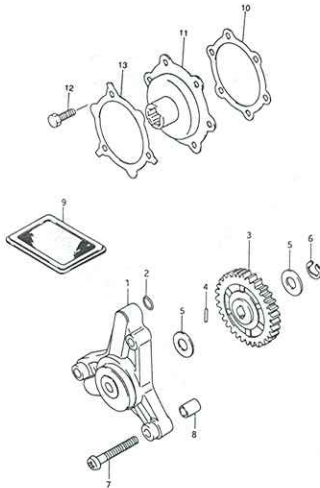


FIG.13 (C-6) CLUTCH

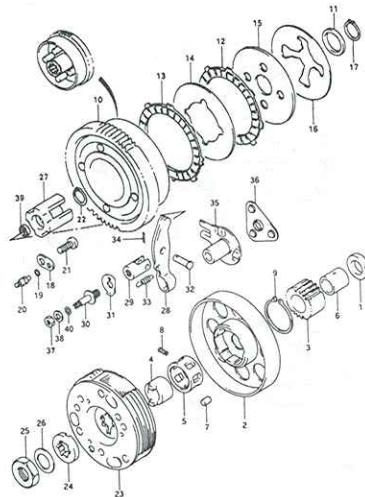


FIG.13 (C-7) CLUTCH

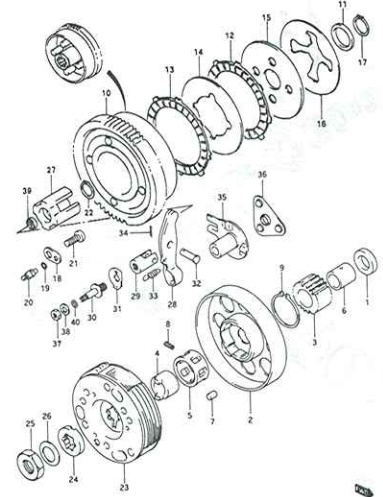


FIG.14 (C-8) TRANSMISSION

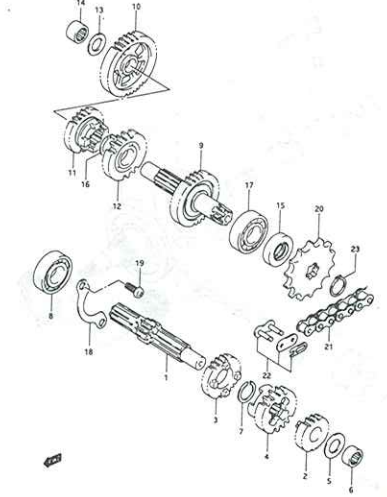


FIG. 15 (C-9) GEAR SHIFTING

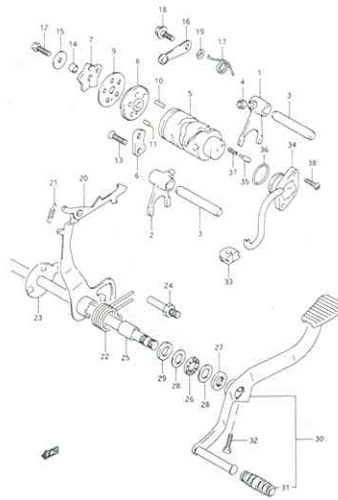


FIG. 15 (C-10) GEAR SHIFTING

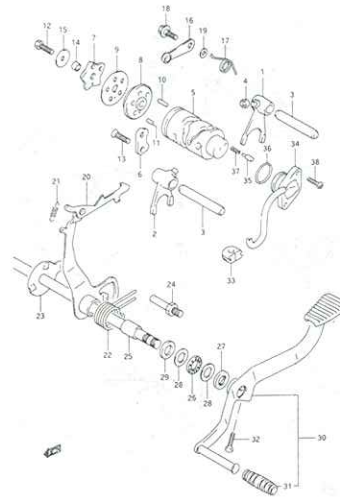


FIG. 16 (C-11) KICK STARTER

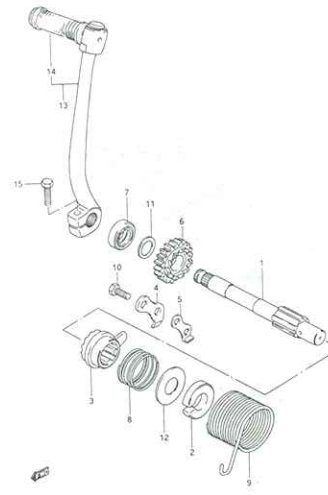


FIG. 17 (D-2) STARTER MOTOR

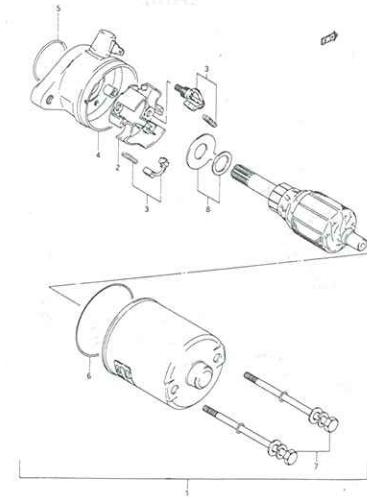


FIG. 18 (D-3) MAGNETO

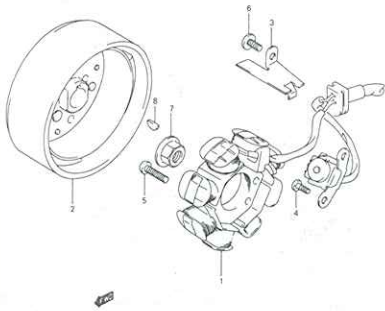


FIG. 19 (D-4) ELECTRICAL

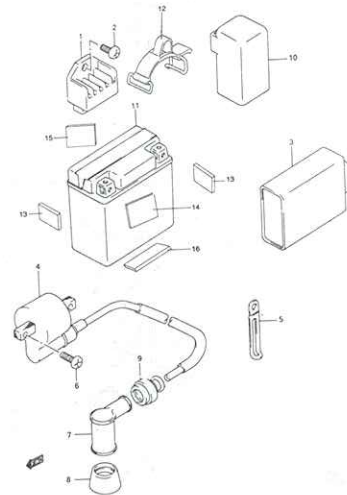


FIG. 20 (D-10) SPEEDOMETER

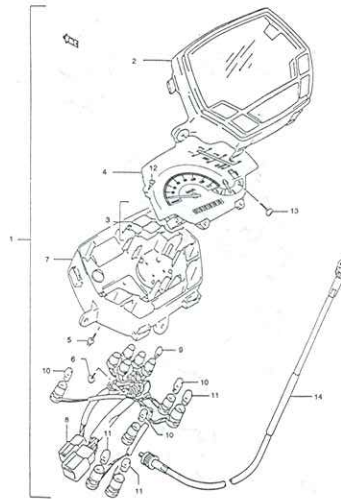
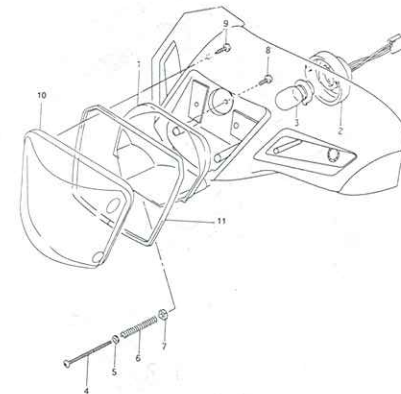
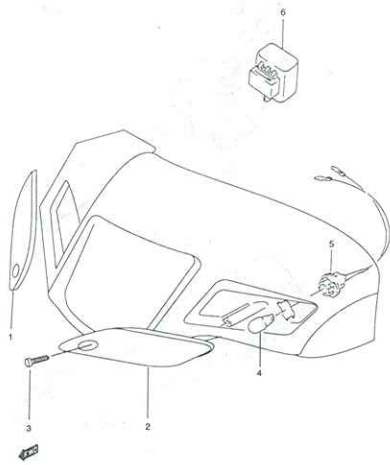


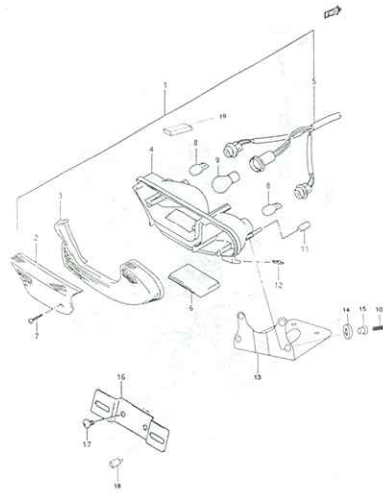
FIG. 21 (D-5) HEADLAMP



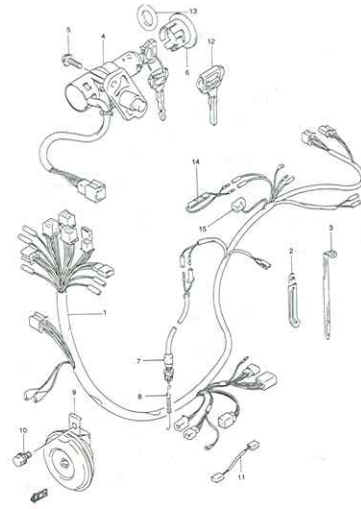
**FIG.22 (D-6) FRONT TURNSIGNAL LAMP**



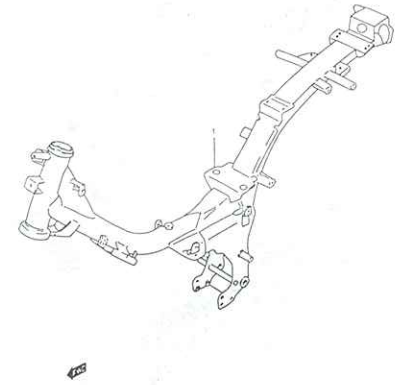
**FIG.23 (D-7) REAR COMBINATION LAMP**



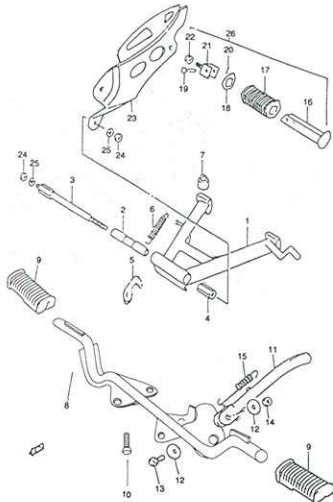
**FIG.24 (D-8) WIRING HARNESS**



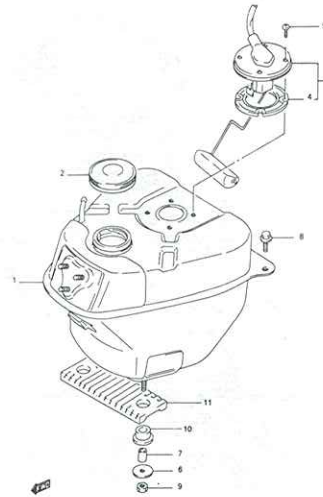
**FIG.25 (D-2) FRAME**



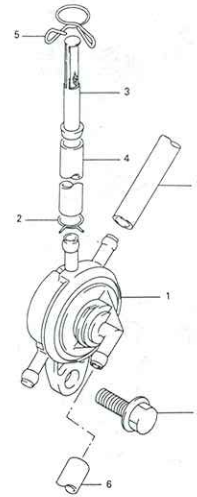
**FIG.26 STAND-FOOTREST**



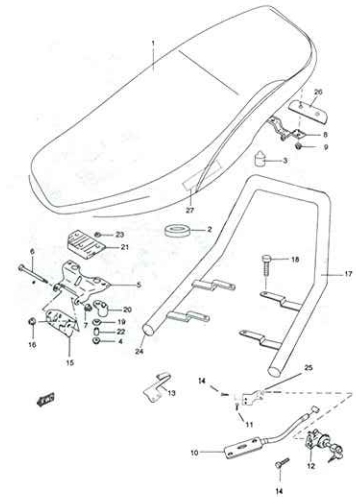
**FIG.27 (E-4) FUEL TANK**



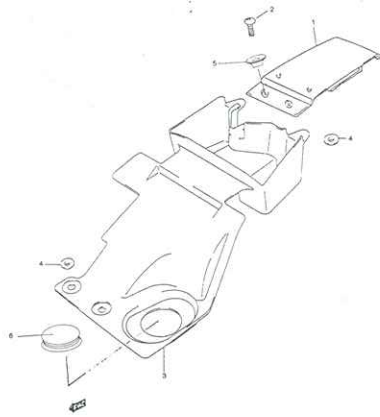
**FIG.28 (E-5) FUEL COCK**



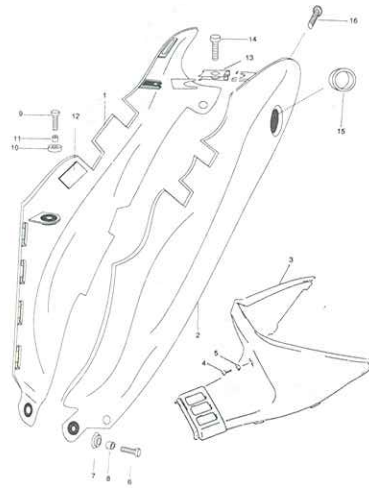
**FIG.29 - SEAT**



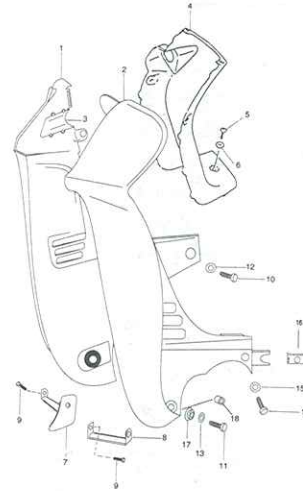
**FIG.30 (D-9) SEAT TAIL COVER**



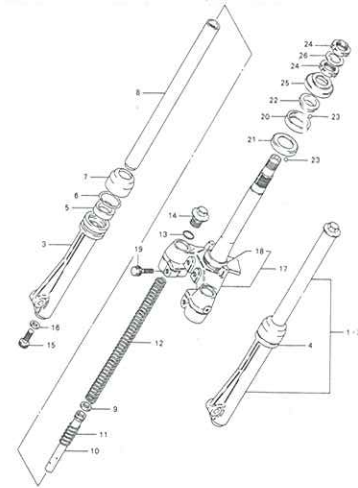
**FIG.31 (D-10) FRAME COVER**



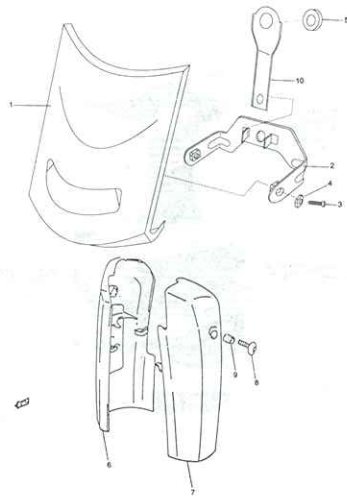
**FIG.32 (D-11) LEG SHIELD**



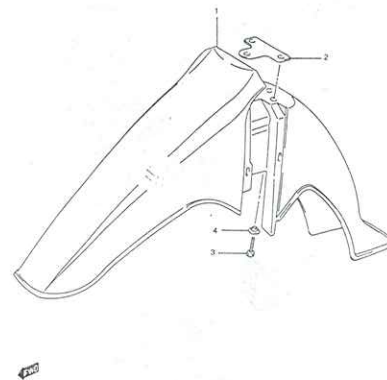
**FIG.33 (F-2) FRONT FORK**



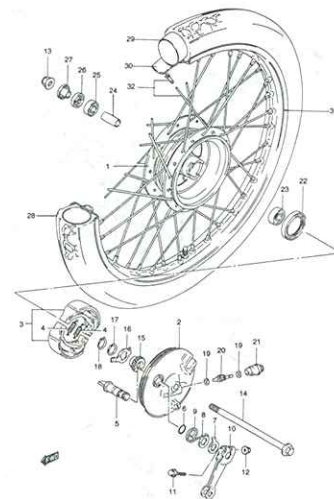
**FIG.34 (E-3) FRONT FORK COVER**



**FIG.35 (E-4) FRONT FENDER**



**FIG.36 (E-5) FRONT WHEEL**



**FIG.37 (E-7) HANDLE COVER**

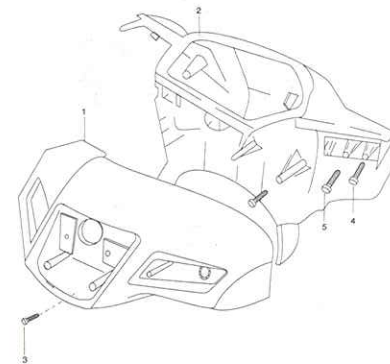


FIG.38 (E-8) HANDLEBAR

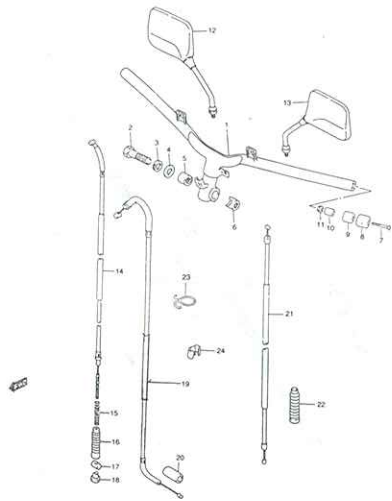


FIG.39 (E-9) HANDLE SWITCH

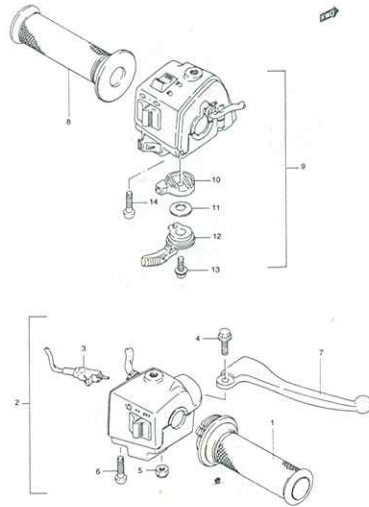


FIG.40 (F-4) REAR SWING ARM

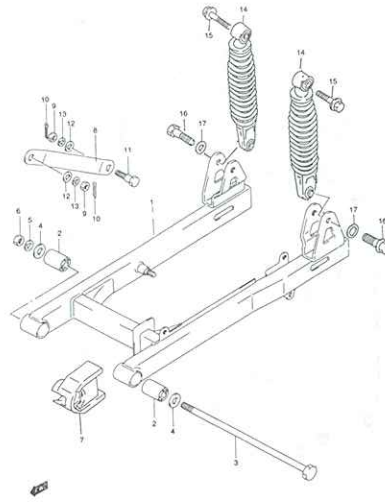


FIG.41 (E-11) REAR BRAKE

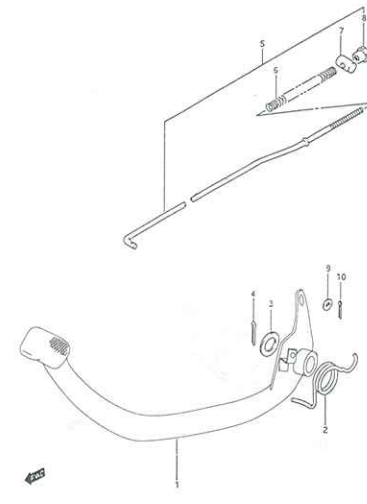


FIG.42 (F-4) REAR FENDER

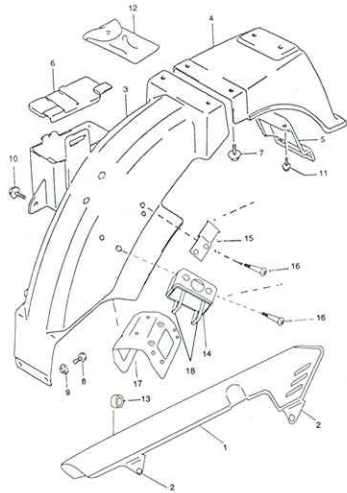


FIG.43 (F-7) REAR WHEEL

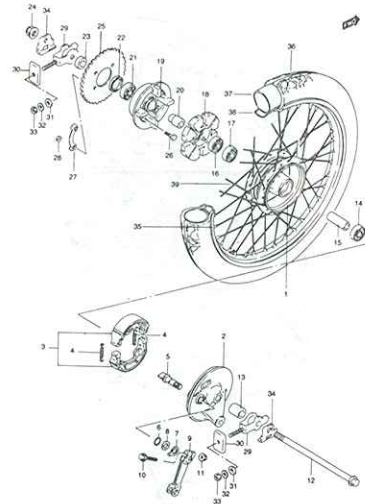


FIG.43 (F-7) REAR WHEEL

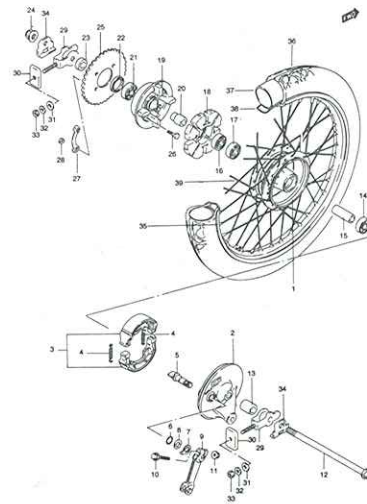


FIG.44 GRAPHIC DESIGN

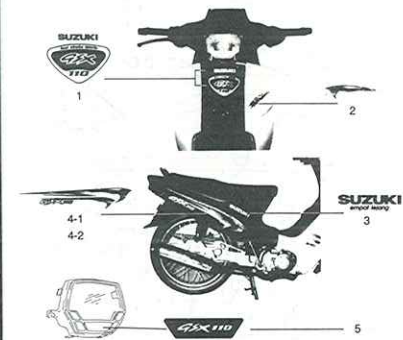
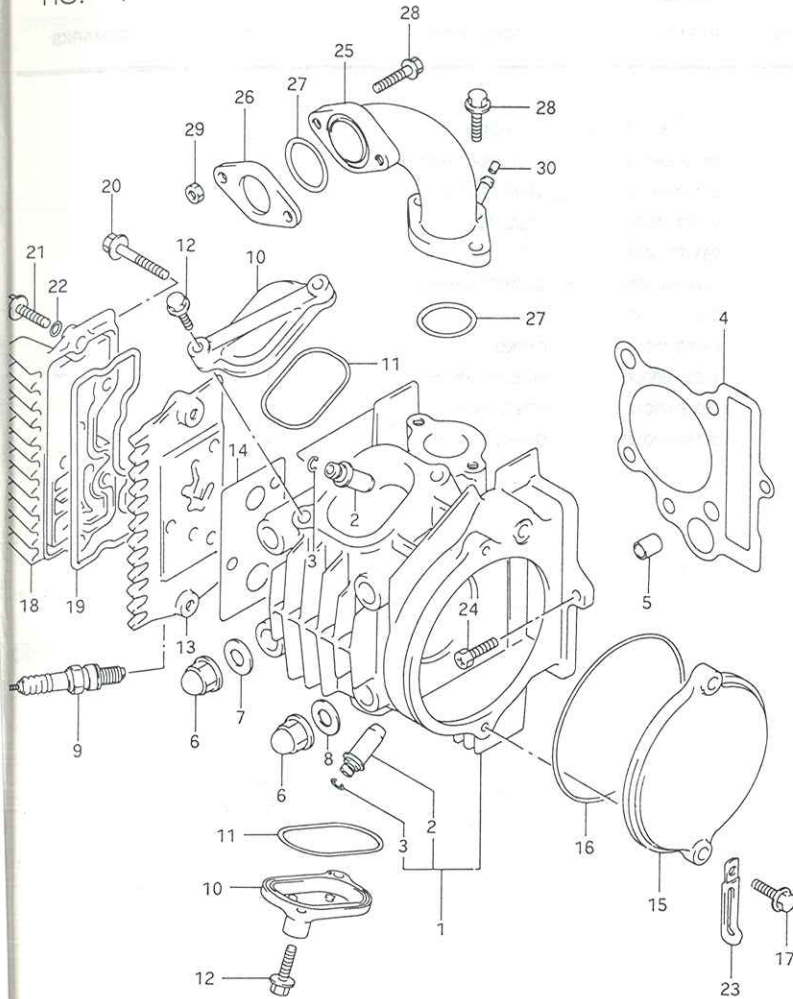




FIG. 1



GSX110

FIG. 1 ( B-2 ) CYLINDER HEAD

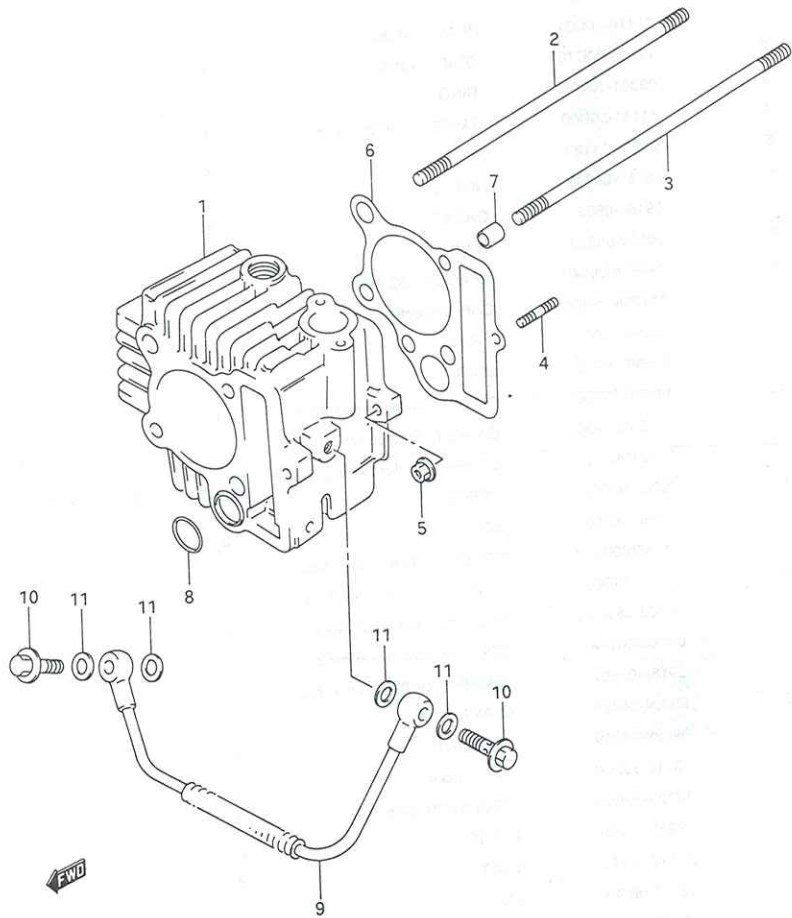
REF. NO.	PART NO.	DESCRIPTIONS	Q'TY	REMARKS
1	11110-30D01	HEAD, cylinder	1	
2	11115-30D70	.GUIDE, valve	2	
3	09381-10004	.RING	2	
4	11141-30D00	GASKET, cylinder head	1	
5	04211-11129	PIN	2	
6	09159-08049	NUT	4	
7	09168-08021	GASKET	1	
8	09160-08039	WASHER	3	
9	09482M00340	SPARK PLUG (NGK C6HSA)	1	
10	11175M09400	CAP, inspection	2	
11	09280-50007	O RING	2	
12	01550-06253	BOLT	4	
13	11134M09D01	COVER, cylinder head (RH)	1	
14	11135M09D00	GASKET, head cover	1	
15	11121M30A01	COVER, cylinder head (LH)	1	
16	09280-84002	O RING	1	
17	01550-06203	BOLT	2	
18	11149M09D01	COVER, cyl head cover No.2	1	
19	11144-09D00	O RING, cyl head cover No.2	1	
20	09103-06143	BOLT, cyl head cover No.2	2	
21	09103-06144	BOLT, cyl head cover No.2	3	
22	09168-06004	WASHER, cyl head cover No.2	1	
23	09404-06429	CLAMP (L:45)	1	
24	09128-06049	BOLT (6x16)	1	
25	13110-30D00	PIPE, intake	1	
26	13129-30A00	INSULATOR, carburetor	1	
27	09280-24005	O RING	2	
28	01547-06253	BOLT	4	
29	09140-06023	NUT	2	
30	13131-30D00	JET, boost hose	1	

FIG. 2

FIG. 2 ( B-3 ) CYLINDER

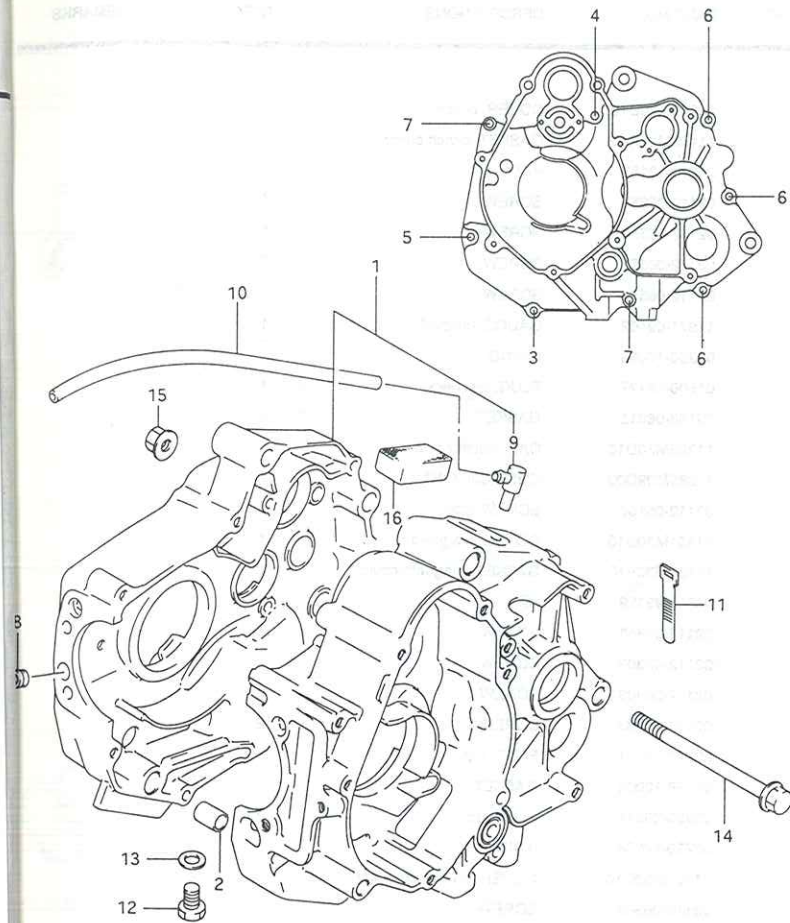
REF. NO.	PART NO.	DESCRIPTIONS	QTY	REMARKS
1	11211-30D00-0F0	CYLINDER	1	
2	09108-08171	STUD BOLT (8X192)	2	
3	09108-08172	STUD BOLT (8X197)	2	
4	01421-06208	STUD BOLT	1	
5	08316-10063	NUT	1	
6	11241M30D00	GASKET, cylinder	1	
7	04211-11129	PIN	2	
8	09280-15014	O RING	1	
9	11280-30D00	PIPE, cylinder oil	1	
10	09360-08012	BOLT, union	2	
11	09168-08016	GASKET, oil pipe	4	

2



GSX110

FIG. 3



GSX110

FIG. 3 ( B-4 ) CRANKCASE

REF. NO.	PART NO.	DESCRIPTIONS	Q'TY	REMARKS
1	11390M30D00	CRANKCASE ASSY	1	
2	04211-13189	.PIN	2	
3	02112-06303	.SCREW	1	
4	02112-06353	.SCREW	1	
5	02112-06403	.SCREW	1	
6	02112-06503	.SCREW	3	
7	02112-06753	.SCREW	2	
8	11329-30D00	.PLATE, oil jet	1	
9	16910-30D00	.UNION, breather hose	1	
10	09359-50823-270	HOSE	1	
11	09407-08401	CLAMP	1	
12	01500-10163	PLUG, oil drain	1	
13	09168-10002	GASKET	1	
14	09103-10087	BOLT (L:105)	2	
15	08319-31105	NUT	2	
16	11186-30D00	SEPARATOR, oil breather	2	

2

FIG. 4

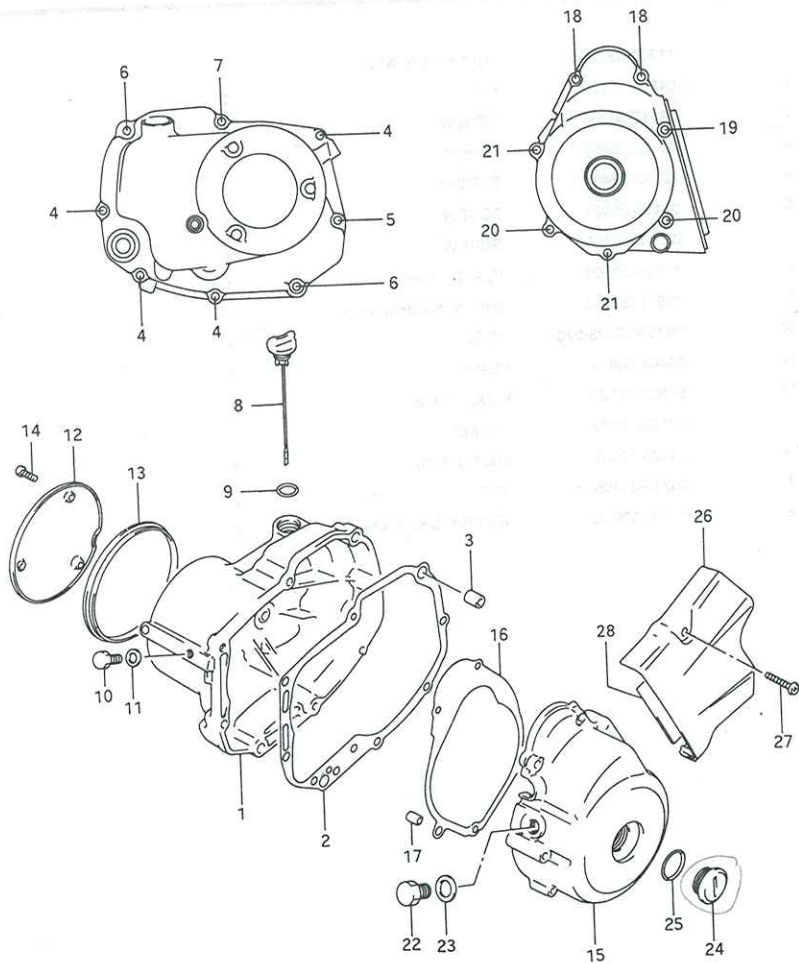
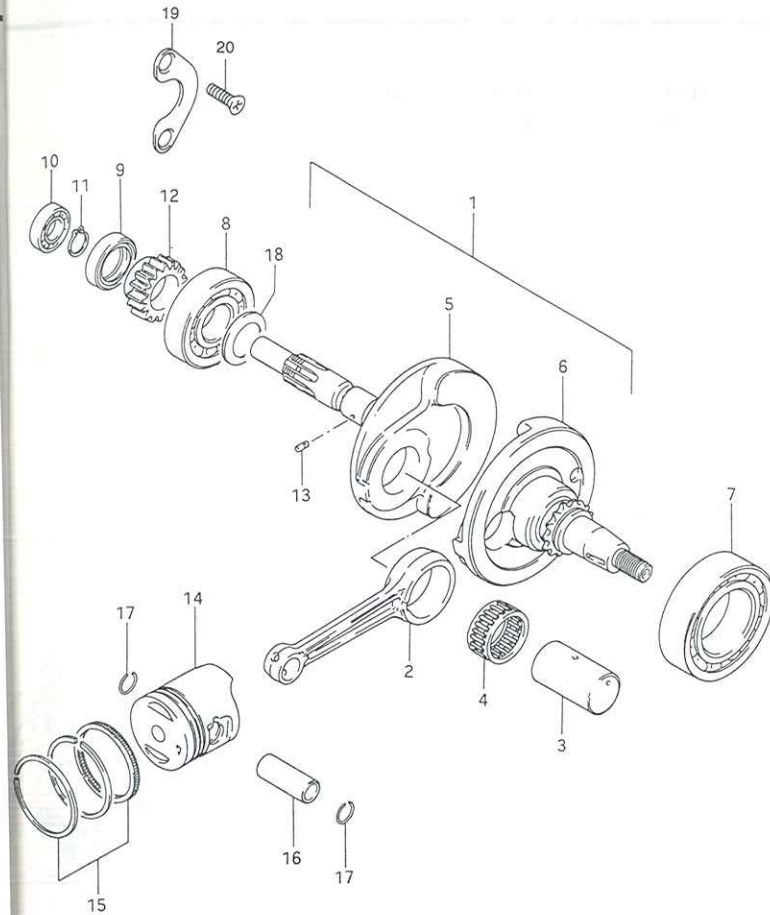


FIG. 4 (B-5) CRANKCASE COVER

REF. NO.	PART NO.	DESCRIPTIONS	Q'TY	REMARKS
1	11340M30D10	COVER, clutch	1	
2	11482M30A10	GASKET, clutch cover	1	
3	04211-13189	PIN	2	
4	02112-06253	SCREW	4	
5	02112-06353	SCREW	1	
6	02112-06503	SCREW	2	
7	02112-06553	SCREW	1	
8	11971-09402	GAUGE, oil level	1	
9	09280-17003	O RING	1	
10	01500-08127	PLUG, oil check	1	
11	09168-08015	GASKET	1	
12	11383M30D10	CAP, clutch cover	1	
13	11389M09D00	CUSHION, CAP	1	
14	02112-05163	SCREW, cap	3	
15	11351M30D10	COVER, magneto	1	
16	11483M30A10	GASKET, magneto cover	1	
17	04211-09129	PIN	2	
18	02112-06853	SCREW	2	
19	02112-06303	SCREW	1	
20	02112-06403	SCREW	2	
21	02112-06503	SCREW	2	
22	09247-12104	PLUG, top	1	
23	09168-12002	GASKET	1	
24	09259-26011	PLUG, hole	1	
25	09280-22008	O RING	1	
26	11361M30D10	COVER, engine sprocket	1	
27	02112-06303	SCREW	2	
28	11362M30D00	DAMPER, engine sprkt cover	1	

GSX110

FIG. 5



GSX110

FIG. 5 ( B-6 ) CRANKSHAFT

REF. NO.	PART NO.	DESCRIPTIONS	QTY	REMARKS
1	12200-30D03	CRANKSHAFT ASSY	1	
2	12161-30D01-0C0	.ROD, connecting	1	
3	12211-09D11-0A0	.PIN, crank	1	
4	09263-28029-0B0	.BEARING	1	
5	12220-30D02	.CRANKSHAFT, RH	1	
6	12260-30D03	.CRANKSHAFT, LH	1	
7	09262-35021-0A0	BEARING	1	
8	09262-25117	BEARING	1	
9	09282-20005	OIL SEAL	1	
10	08113-60010	BEARING	1	
11	08331-41289	CIRCLIP, crank brg. r	1	
12	16321-30A02	GEAR, oil pump drive	1	
13	04221-03059	PIN	1	
14-1	12111M30D03-0F0	PISTON	1	
14-2	12111M30D03-050	PISTON	1	
14-3	12111M30D03-100	PISTON	1	
15-1	12140-30D10	RING SET, piston	1	
15-2	12140-30D10-050	RING SET, piston	1	
15-3	12140-30D10-100	RING SET, piston	1	
16	12151-30D01	PIN, piston	1	
17	09381-14001	CIRCLIP	2	
18-1	09181-25051	SHIM (T:0.60)	1	
18-2	09181-25052	SHIM (T:0.65)	1	
18-3	09181-25053	SHIM (T:0.70)	1	
18-4	09181-25054	SHIM (T:0.75)	1	
18-5	09181-25055	SHIM (T:0.80)	1	
18-6	09181-25056	SHIM (T:0.85)	1	
18-7	09181-25057	SHIM (T:0.90)	1	
18-8	09181-25058	SHIM (T:0.95)	1	
18-9	09181-25059	SHIM (T:1.00)	1	
18-10	09181-25060	SHIM (T:1.10)	1	
18-11	09181-25061	SHIM (T:1.10)	1	
18-12	09181-25062	SHIM (T:1.15)	1	
18-13	09181-25061	SHIM (T:1.10)	1	

FIG. 5

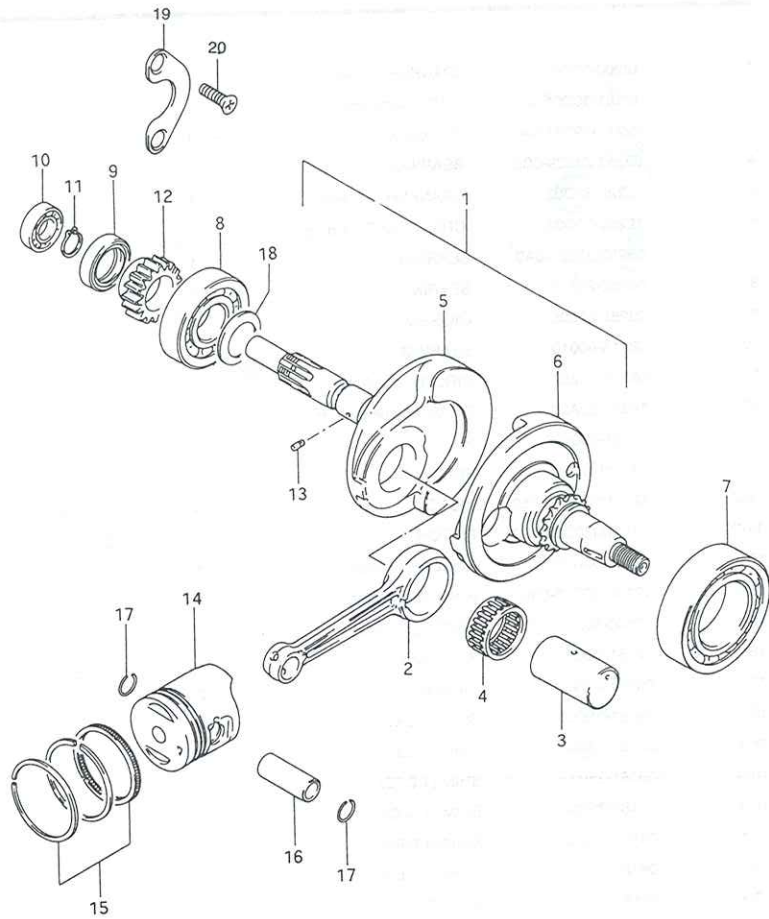


FIG. 5 ( B-7 ) CRANKSHAFT

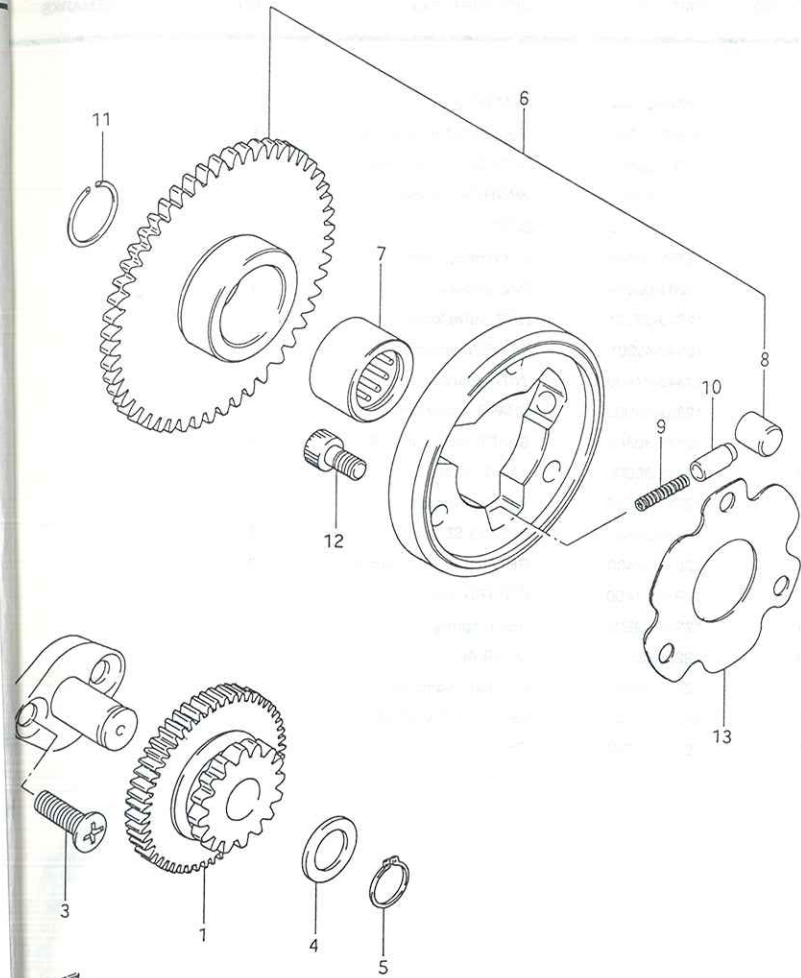
REF. NO.	PART NO.	DESCRIPTIONS	QTY	REMARKS
19	12548-09D00	RETAINER, shaft oil seal	1	
20	02122-05123	SCREW	2	

2



GSX110

FIG. 6



GSX110

FIG. 6 ( B-8 ) STARTER CLUTCH

REF. NO.	PART NO.	DESCRIPTIONS	Q'TY	REMARKS
1	12611-30A00	GEAR, starter idle (NT:68/14)	1	
2	12612-09410	SHAFT, starter idle gear	1	
3	02122-06163	SCREW	2	
4	09160-13010	WASHER	1	
5	08331-31139	CIRCLIP	1	
6	12600-30851	Starter Clutch Set	1	
7	09263-25040	.BEARING	1	
8	09261-10003	.ROLLER	3	
9	09440-03004	.SPRING	3	
10	12633-05300	.PIECE, push	3	
11	09380-25010	CIRCLIP, starter clutch brg	1	
12	07130-06123	BOLT (6X10)	3	
13	12649-30D00	SHIM, clutch hub	1	

FIG. 7

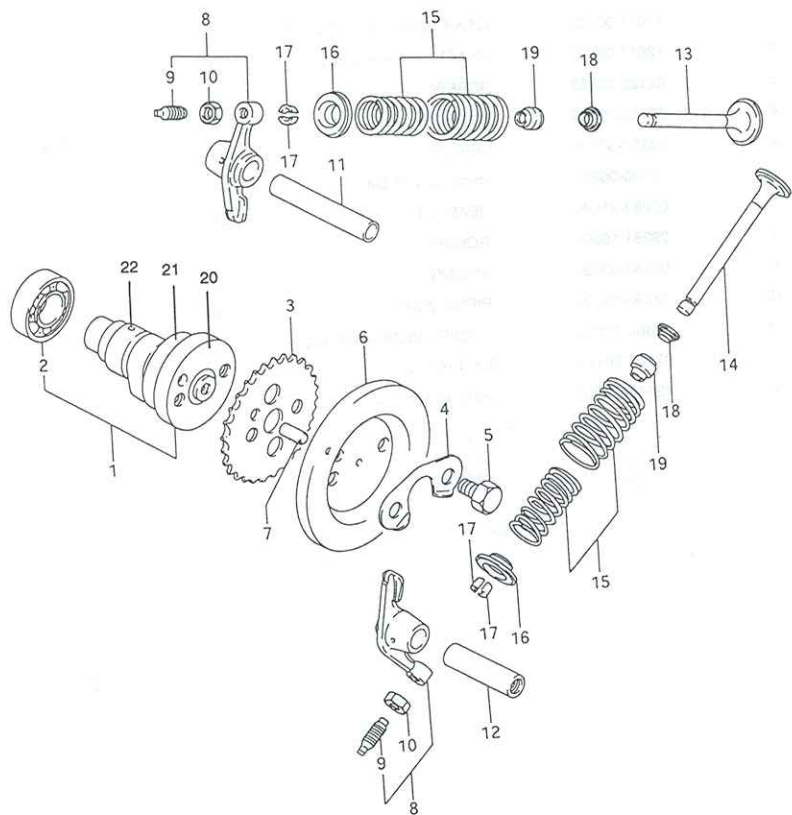


FIG. 7 (B-9) CAM SHAFT/VALVE

REF. NO.	PART NO.	DESCRIPTIONS	Q'TY	REMARKS
1	12710-30D00	CAM SHAFT	1	
2	09262-15026	.BEARING Camshaft RH	1	
3	12741-30A10	SPROCKET, cam shaft	1	
4	12747-30D00	WASHER, sprocket	1	
5	09111-06053	BOLT	2	
6	12755-30A00	FLYWHEEL, cam shaft	1	
7	09261-05009	PIN, sprocket	1	
8	12840-09D01	ARM, valve locker	2	
9	12842-49201	.SCREW, adjusting	2	
10	12843-27A00	.NUT, adjusting	2	
11	12861-09D00	SHAFT, locker arm IN	1	
12	12871-30A00	SHAFT, locker arm EX	1	
13	12911-30D00	VALVE, intake	1	
14	12912-30D00	VALVE, exhaust	1	
15	12920-30A01	SPRING SET, valve	2	
16	12931-09400	RETAINER, valve spring	2	
17	12932-27A00	COTTER, valve	4	
18	12933-39E00	SEAT, spring	2	
19	09289-05008	OIL SEAL	2	
20	12713-09401	FLANGE, Camshaft	1	
21	09262-17037	BEARING, Camshaft L	1	
22	12711-30D00	Camshaft	1	

2

FWD

GSX110



FIG. 8

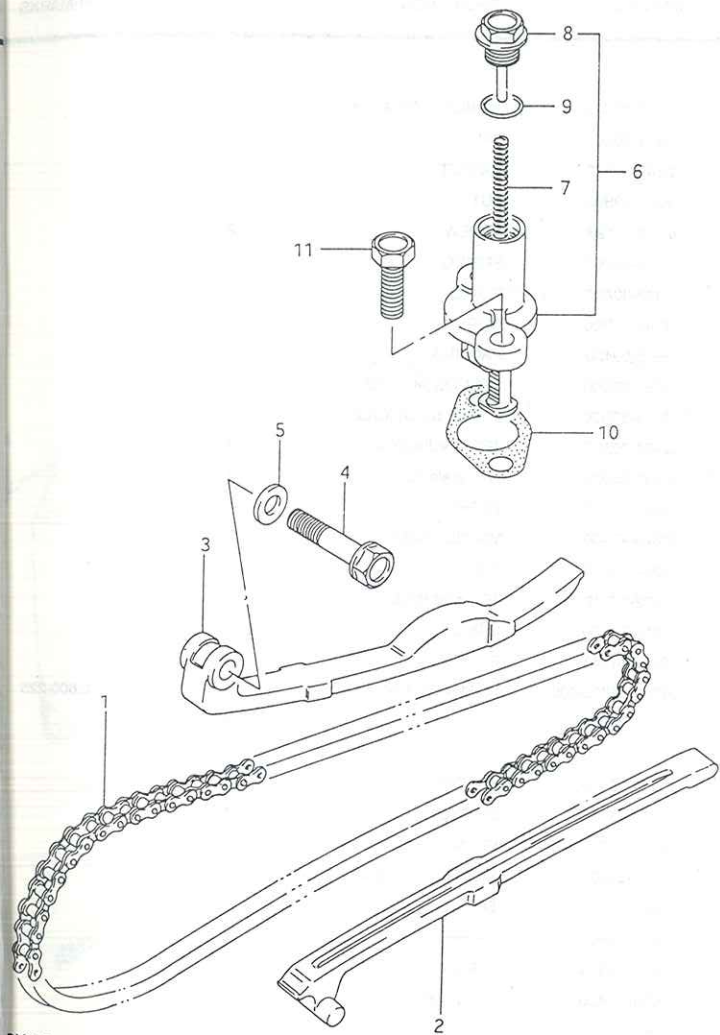


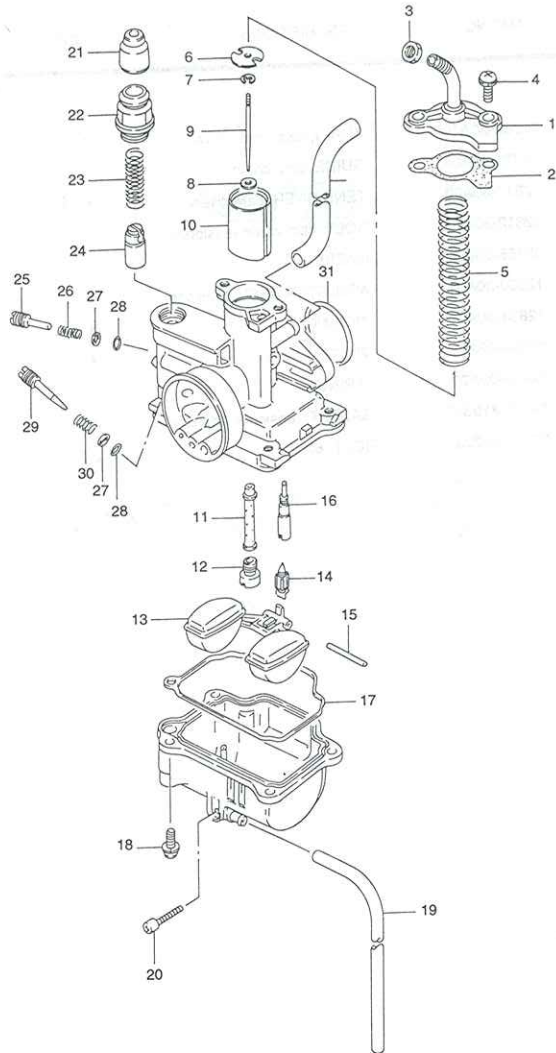
FIG. 8 ( B-10 ) CAM CHAIN

REF. NO.	PART NO.	DESCRIPTIONS	QTY	REMAR
1	12760-30A10	CHAIN, cam shaft drive	1	
2	12771-30A04	GUIDE, cam chain	1	
3	12811-30A02	TENSIONER, cam chain	1	
4	12812-30A00	BOLT, cam chain tensioner	1	
5	09168-06004	GASKET	1	
6	12830-30A01	ADJUSTER ASSY, tensioner	1	
7	12833-30A01	.SPRING	1	
8	12834-02A00	.PLUG, adjuster	1	
9	12832-02A00	.O RING	1	
10	12837M19B10	GASKET, tensioner adjuster	1	
11	07120-06203	BOLT (6X20)	2	

2

FIG. 9

2



GSX110

FIG. 9 ( C-2 ) CARBURETOR

REF. NO.	PART NO.	DESCRIPTIONS	Q'TY	REMARKS
	13200-30D20	CARBURETOR ASSY	1	
1	13261-30D00	.CAP	1	
2	13249-30A10	.GASKET	1	
3	13661-02B00	.NUT	1	
4	02112-34123	.SCREW	2	
5	13573-30D00	.SPRING	1	
6	13447-30A00	.PLATE	1	
7	13394-40D00	.CLIP	1	
8	13615-09400	.PACKING	1	
9	13383-30D00	.NEEDLE, jet (3DL2-3)	1	
10	13551-30D00	.VALVE, piston (CA:2.5)	1	
11	09494-00887	.JET, needle (D-9)	1	
12	09491-85005	.JET, main (85)	1	
13	13250-16A00	.FLOAT	1	
14	13370-47A00	.VALVE, needle	1	
15	13254-20010	.PIN	1	
16	09492-17012	.JET, pilot (17.5)	1	
17	13258-30A00	.O RING	1	
18	13601-04148	.SCREW	4	
19	09354-25703-600	.HOSE (2.5x7x600)	1	L:600-225
20	13247-13A00	.SCREW	1	
21	13681-04010	.CAP	1	
22	13418-43410	.HOLDER	1	
23	13417-01010	.SPRING	1	
24	13411-01010	.PLUNGER	1	
25	13267-09400	.SCREW, air ( 1 3/4)	1	
26	13494-09410	.SPRING	1	
27	13291-29900	.WASHER	2	
28	13295-29900	.O RING	2	
29	13267-47A00	.ADJUSTER	1	
30	13268-35010	.SPRING	1	
31	09280-24006	.O RING	1	
32	09352-40703-600	.HOSE (4x7x600)	1	L:600-4

FIG. 10

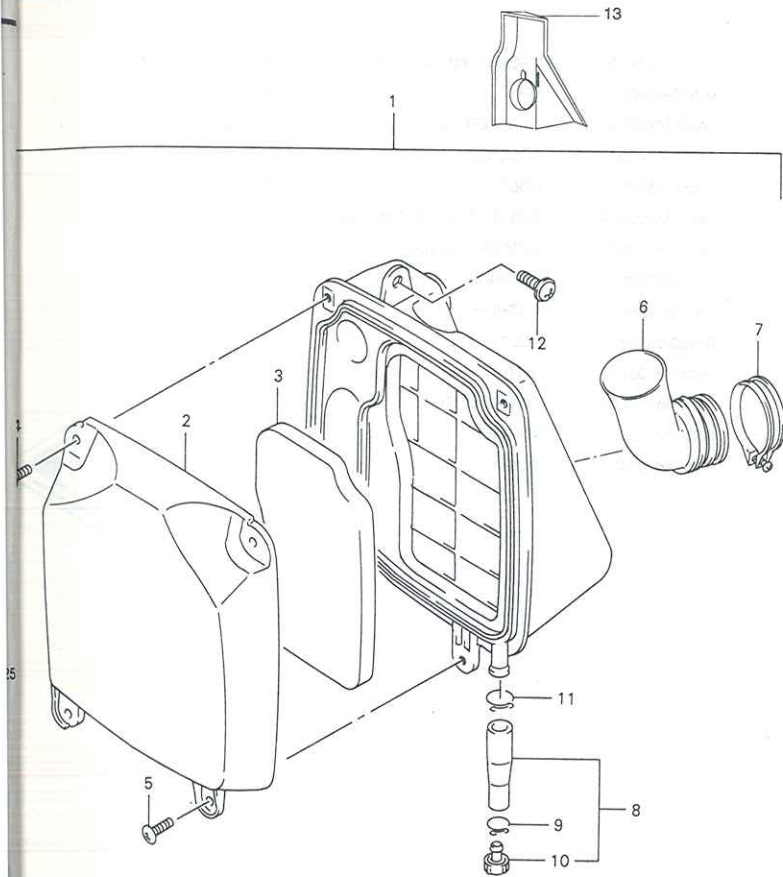


FIG. 10 ( C-3 ) AIR CLEANER

REF. NO.	PART NO.	DESCRIPTIONS	Q'TY	REMARK
1	13700M30D20	CLEANER ASSY, air	1	
2	13741M30D20	.CAP	1	
3	13781M30D20	.FILTER	1	
4	02142-05123	.SCREW	2	
5	02142-05163	.SCREW	2	
6	13881-30D20	.TUBE, outlet	1	
7	09402-40208	.CLAMP	1	
8	13870-11078	.TUBE ASSY, drain	1	
9	09401-11101	..CLIP	1	
10	13877-38A00	..STOPPER	1	
11	09401-13409	.CLIP	1	
12	09136-06017	SCREW	2	
13	13892M30D20	BOOT INLET	1	

2

GSX110

FIG. 11

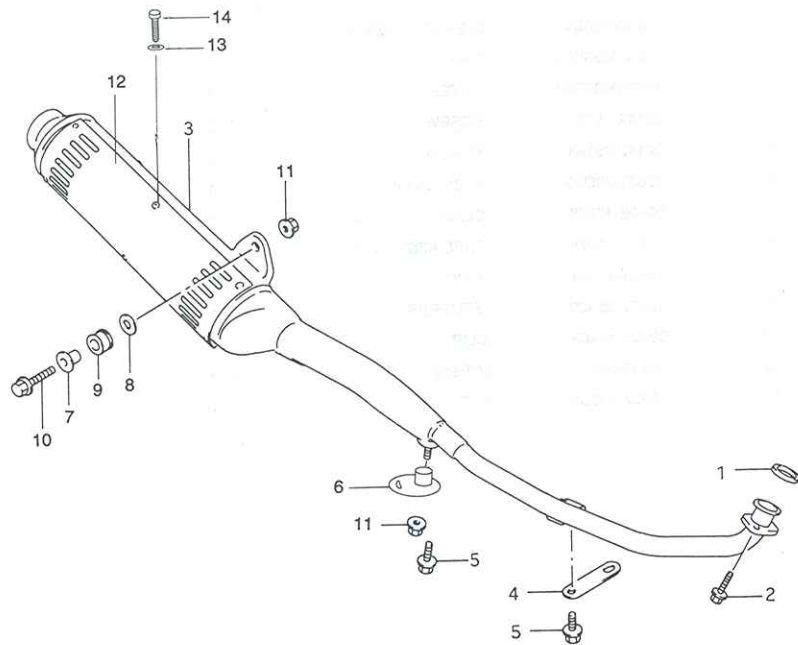


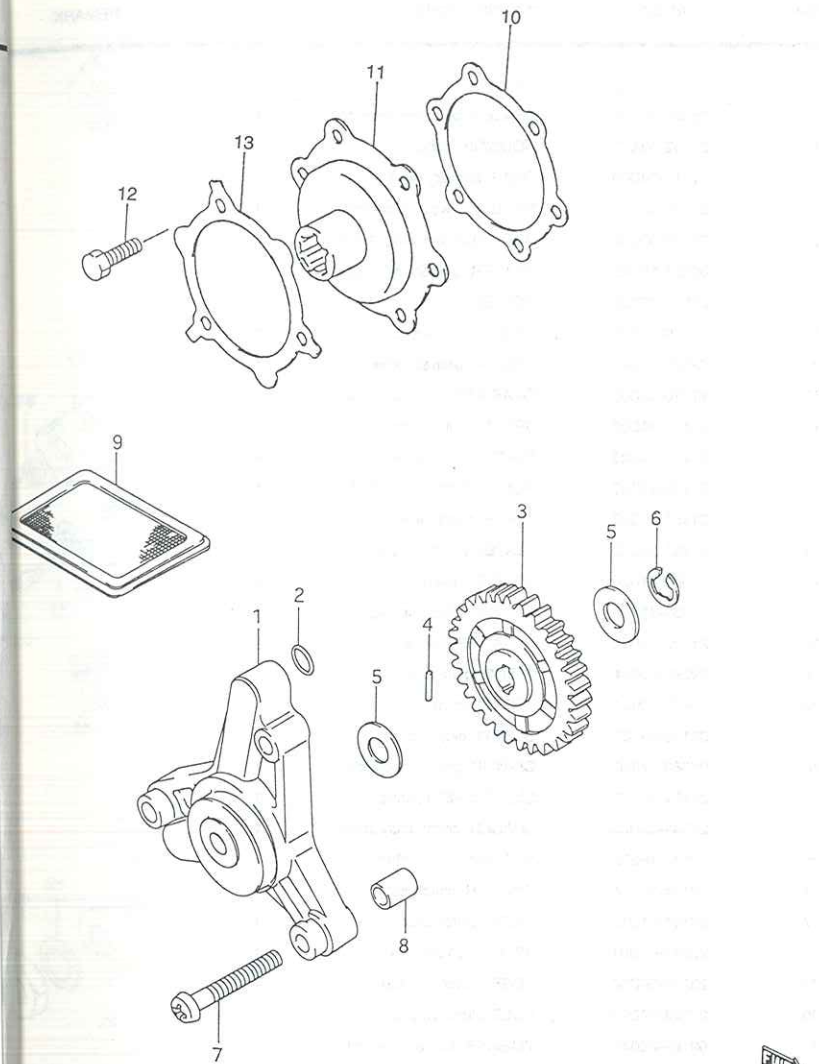
FIG. 11 (C-4) MUFFLER

REF. NO.	PART NO.	DESCRIPTIONS	QTY	REMARK
1	14181M30A10	GASKET, exhaust pipe	1	
2	01570-06203	BOLT	2	
3	14305M30D00	MUFFLER ASSY	1	
4	14411M30D00	BRACKET, exh sprt	1	
5	01550-08123	BOLT	2	
6	14415M30D99A	BRACKET, exh sprt rear No.1	1	
7	14773M41D00	SPACER, muf sprt	1	
8	09160-08032	WASHER	1	
9	09320-12058	CUSHION	1	
10	01550-08353	BOLT	1	
11	08319-31083	NUT	2	
12	14781M30D00A	COVER MUFFLER	1	
13	08321M01068	WASHER	6	
14	02142M06087	BOLT	6	

FWD

GSX110

70



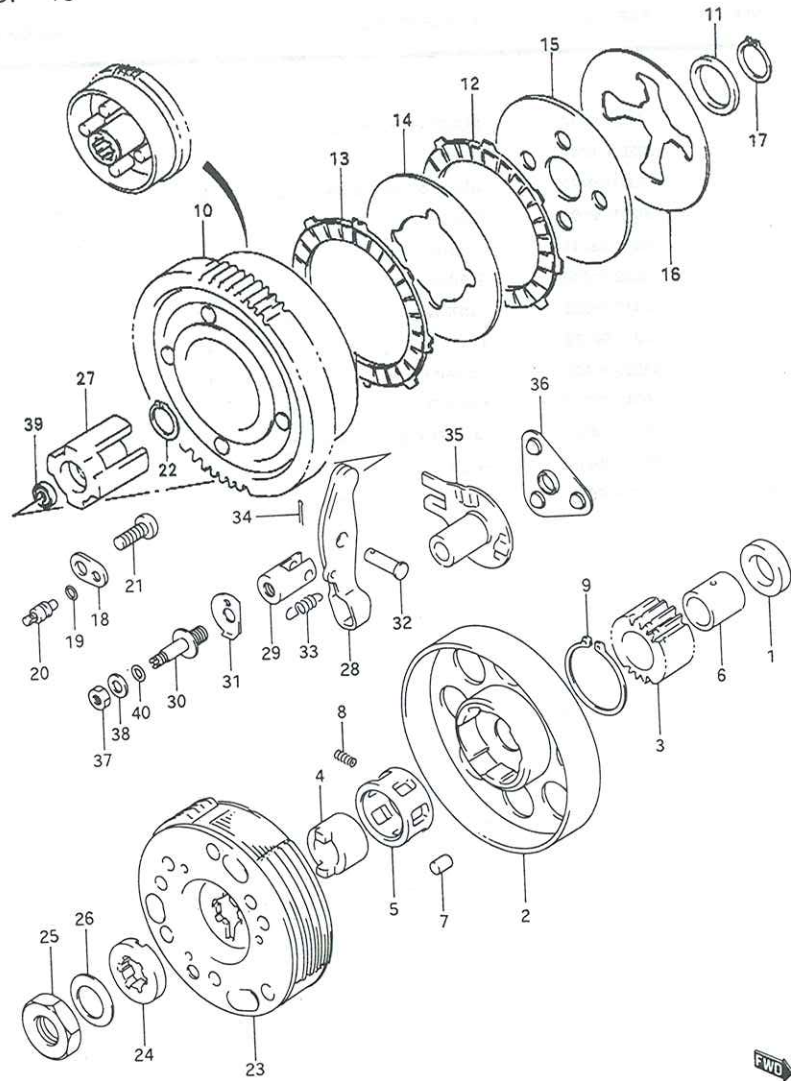
GSX110

FIG. 12 ( C-5 ) OIL PUMP

REF. NO.	PART NO.	DESCRIPTIONS	Q'TY	REMARK
1	16400-09410	PUMP ASSY, engine oil	1	
2	09280-10015	O RING	2	
3	16331-09420	GEAR, oil pump driven (NT:31)	1	
4	09261-02008	ROLLER	1	
5	08211-08141	WASHER	2	
6	08332-11069	E RING	1	
7	02112-06353	SCREW	3	
8	04211-09129	PIN	2	
9	16520-30A00	STRAINER, engine oil	1	
10	16543-30D00	GASKET	1	
11	16540-30D00	COVER, engine oil filter	1	
12	09100-05019	BOLT	3	
13	16544-30D00	WASHER, oil filter cover	1	

2

FIG. 13

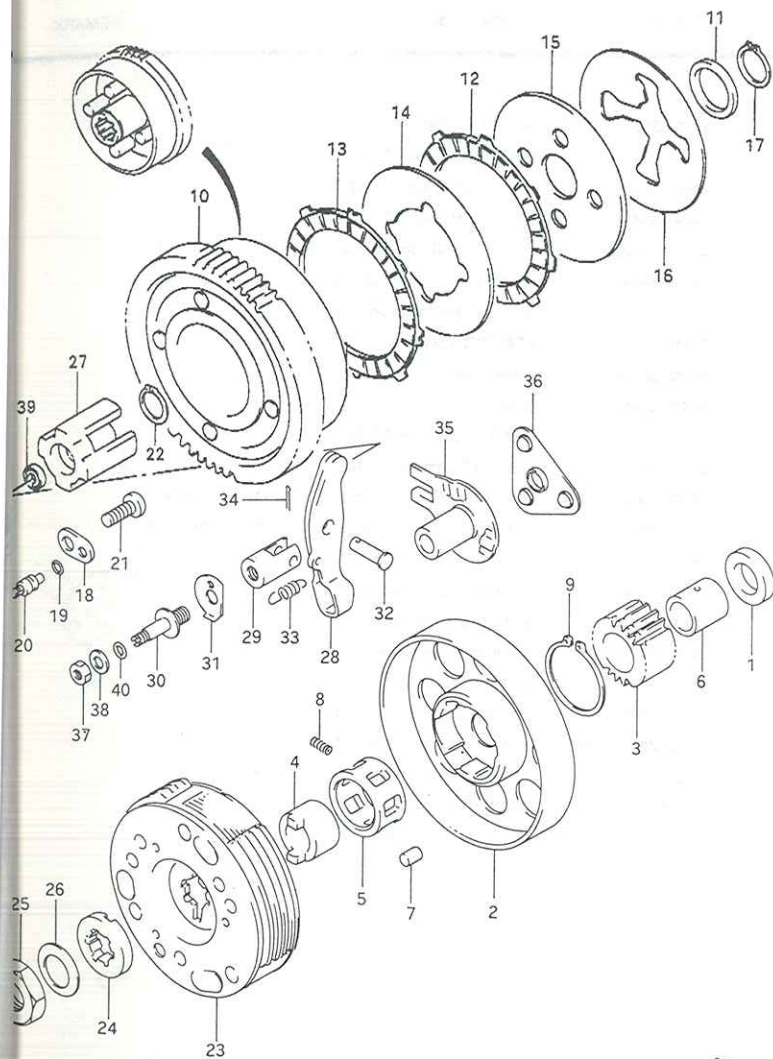


GSX110

FIG. 13 (C-6) CLUTCH

REF. NO.	PART NO.	DESCRIPTIONS	Q'TY	REMARK
1	16325-30D00	SPACER, oil pump drive gear	1	
2	21102-30A10	HOUSING, clutch	1	
3	21111-09D00	GEAR, primary drive	1	
4	21631-02A03	RACE, one way clutch INR	1	
5	21652-30D00	RETAINER, one way clutch	1	
6	09180-16045	SPACER, primary drive gear	1	
7	09261-07006	ROLLER, one way clutch	3	
8	09440-02003	SPRING, one way clutch	1	
9	08331-31346	CIRCLIP, primary drive	1	
10	21210-30D00	GEAR ASSY, primary driven	1	
11	21412-30D00	SPACER, clutch spring	1	
12	21441-21D20	PLATE, clutch drive	4	
13	21442-21D20	PLATE, clutch driven No.2	1	
14	21451-21D20	PLATE, clutch driven	4	
15	21461-30D00	PLATE, clutch pressure	1	
16	21481-21D20	SPRING, clutch	1	
17	08331-31216	CIRCLIP, clutch spring	1	
18	21499-30D00	RETAINER, clutch oil	1	
19	09280-40004	O RING, clutch oil	1	
20	09493-26007	JET, clutch oil	1	
21	02112-06163	SCREW, clutch oil	1	
22	09380-17010	CIRCLIP, gear shift clutch	1	
23	21501-30D00	CLUTCH ASSY, shoe	1	
24	21541-30D00	SPACER, clutch assy shoe	1	
25	09140-16025	NUT, clutch assy shoe	1	
26	09164-16004	WASHER, clutch assy	1	
27	23121-21D10	PIECE, clutch push	1	
28	23221-09D01	ARM, clutch release	1	
29	23222-09D00	BOSS, clutch release	1	
30	23223-09D00	BOLT, clutch release	1	
31	09169-08046	WASHER, CL release bolt	1	
32	09200-07005	PIN, clutch release arm	1	
33	09443-06053	SPRING, clutch release	1	
34	04111-16208	PIN, clutch release	1	
35	23230-30D00	GUIDE, release ball outer	1	

FIG. 13



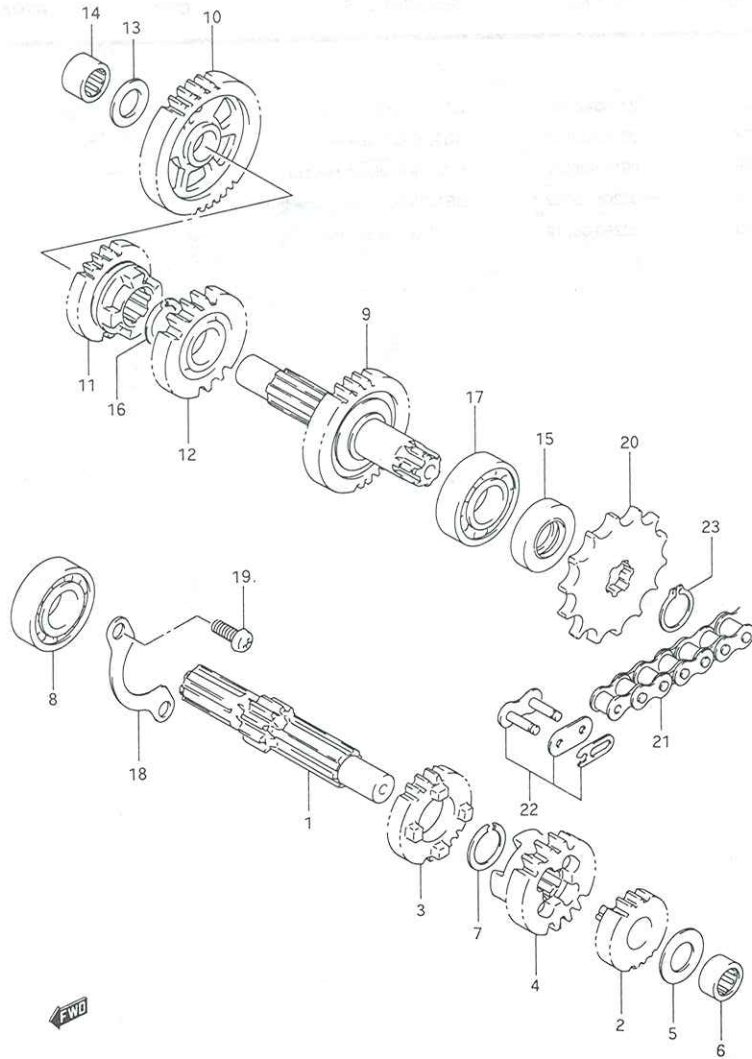
GSX110



FIG. 13 ( C-7 ) CLUTCH

REF. NO.	PART NO.	DESCRIPTIONS	Q'TY	REMARK
36	23250-35401	BALL, clutch release	1	
37	09140-08019	NUT, clutch release	1	
38	09160-08092	WASHER, clutch release	1	
39	09266-16002	BEARING, PUSH, piece thrust	1	
40	09280-08012	O RING, release bolt	1	

FIG. 14



2

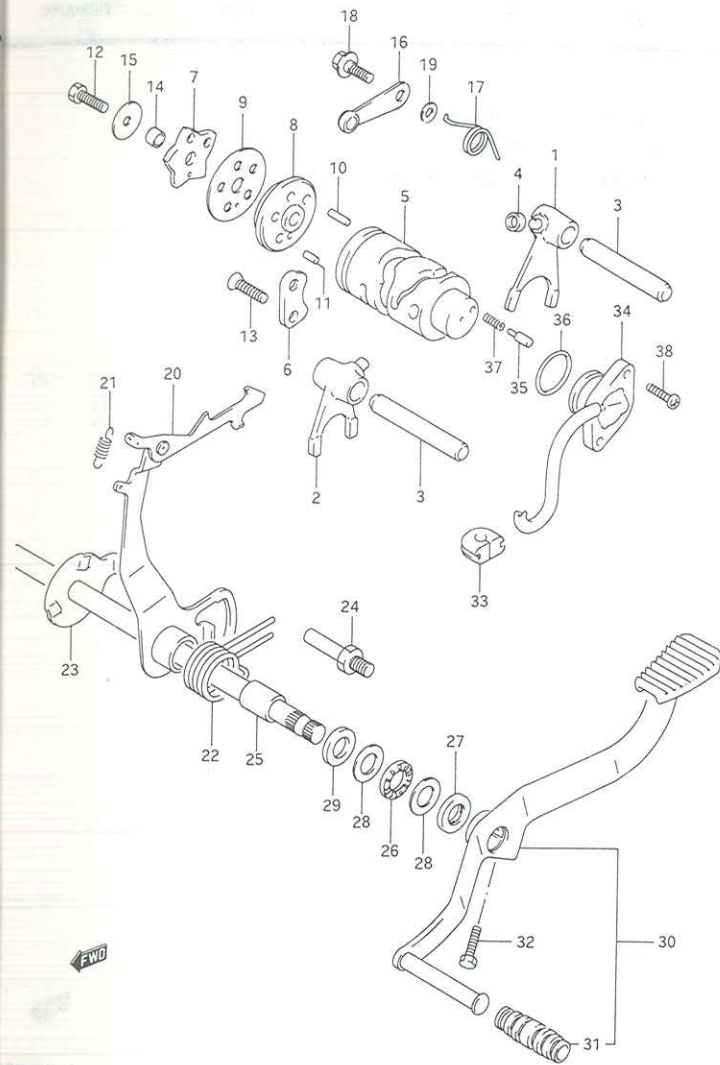
GSX110

FIG. 14 ( C-8 ) TRANSMISSION

REF. NO.	PART NO.	DESCRIPTIONS	Q'TY	REMARK
1	24121-35510	SHAFT, counter	1	
2	24221-35420	GEAR, 2ND drive (NT:16)	1	
3	24231-30A10	GEAR, 3RD drive (NT:19)	1	
4	24241-30A10	GEAR, 4TH drive (NT:19)	1	
5	09160-13006	WASHER, 2ND drive thrust	1	13x24x1
6	09263-13001	BEARING, counter shaft LH	1	13x19x12
7	09380-17007	CIRCLIP, 3RD drive gear	1	
8	08110-62030	BEARING, counter shaft RH	1	
9	24130-30A20	SHAFT, drive	1	
10	24310-30A10	GEAR, 1ST driven (NT:33)	1	
11	24331-30A10	GEAR, 3RD driven (NT:26)	1	
12	24341-35410	GEAR, 4TH driven (NT:20)	1	
13	09160-13006	WASHER, 1ST driven gear	1	13x24x1
14	09263-13001	BEARING, drive shaft RH	1	13x19x12
15	09283-17011	SEAL, drive shaft oil	1	
16	09380-17007	CIRCLIP, 4TH driven gear	1	
17	08110-62030	BEARING, drive shaft LH	1	
18	24741-09401	RETAINER, counter shaft	1	
19	02112-06103	SCREW	2	
20	27511-26400	SPROCKET, engine (NT:14)	1	
21	27600M20910-098	CHAIN ASSY, drive 98L	1	
22	27620-20910	.JOINT, drive	1	
23	08331-31169	CIRCLIP, engine sprocket	1	



FIG. 15



GSX110

FIG. 15 ( C-9 ) GEAR SHIFTING

REF. NO.	PART NO.	DESCRIPTIONS	Q'TY	REMARK
1	2E210-30A10	FORK, gear shift No.1	1	
2	25220-30A10	FORK, gear shift No.2	1	
3	25421-35403	SHAFT, shift fork	2	
4	09180-06086	SPACER, shift fork No.1	1	
5	25310-30A40	CAM, gear shift	1	
6	25341-09400	RETAINER, shift cam	1	
7	25381-30A20	PLATE, shift cam stopper	1	
8	25382-30A30	PLATE, shift cam No.2	1	
9	25382-35411	GUIDE, GR SHF cam	1	
10	09261-04002	PIN, shift cam	2	
11	09261-04012	PIN, shift cam	2	
12	01500-06303	BOLT, shift cam pin	1	
13	02122-06163	SCREW, shift cam retainer	2	
14	04211-09109	PIN, stopper plate	1	
15	08211-06221	STOPPER, shift cam pin	1	
16	25350-09D00	STOPPER, shift cam	1	
17	25355-09400	SPRING, shift cam	1	
18	09111-06041	BOLT, shift cam	1	
19	08211-06121	WASHER, shift cam	1	
20	25520-09D03	ARM, gear shift	1	
21	09443-05019	SPRING, shift PAWL	1	
22	09444-25002	SPRING, shift arm return	1	
23	25510-30D00	SHAFT, gear shift	1	
24	25671-31C00	STOPPER, shift arm	1	
25	09180-12036	SPACER, shift arm	1	
26	09263-12019	BEARING, gear shift arm	1	
27	09285-12002	SEAL, shift shaft oil	1	
28	08211-12261	WASHER, shift shaft	1	
29	08211-20264	WASHER, shift shaft	1	
30	25610M30D00	LEVER ASSY, gear shift	1	
31	25652M16500	.RUBBER, gear pedal	1	
32	09100M06091	BOLT, shift lever	1	
33	31482-47000	GROMMET, position SW	1	
34	37720-30D00	BASE ASSY, gear shift	1	
35	09209-05011	CONTACT, gear position	1	

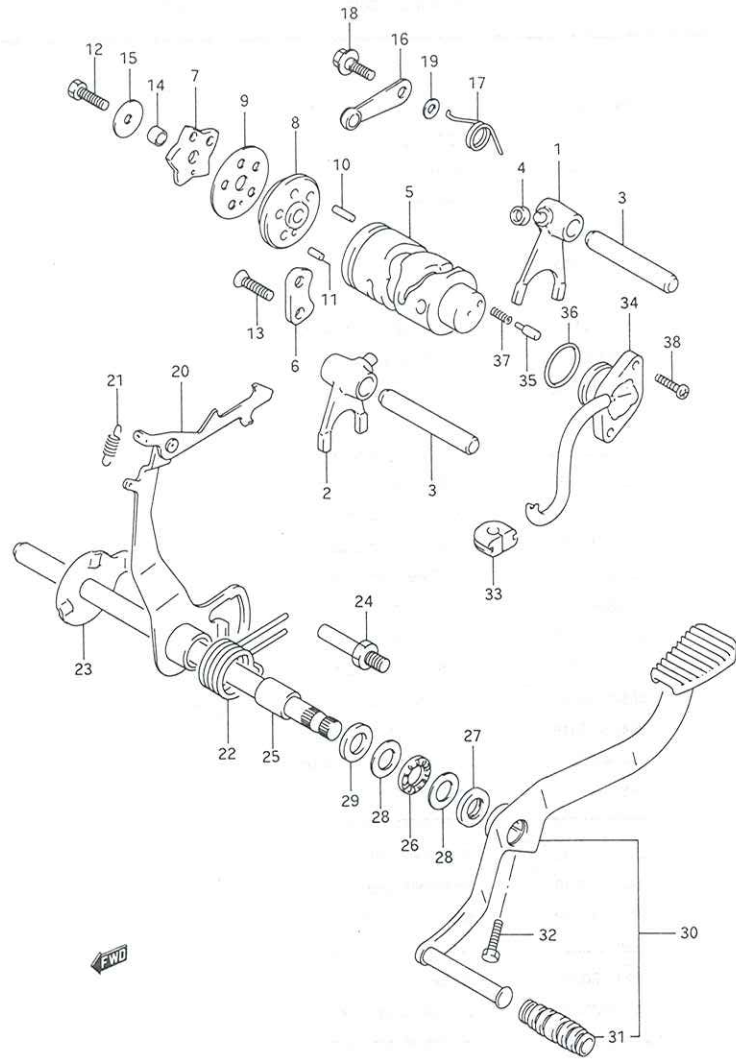
2

FIG. 15

FIG. 15 ( C-10 ) GEAR SHIFTING

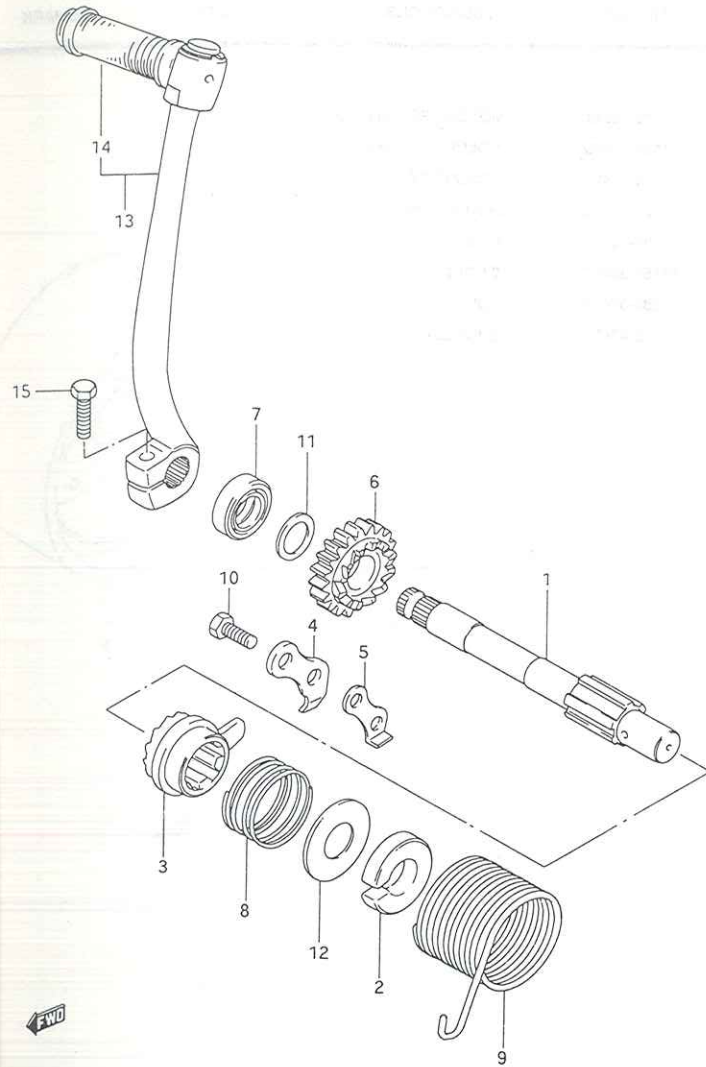
REF. NO.	PART NO.	DESCRIPTIONS	Q'TY	REMARK
36	09280-21008	O RING, gear shift	1	
37	09440-04010	SPRING, gear shift	1	
38	02112-05163	SCREW, gear shift	2	

2



GSX110

FIG. 16



GSX110

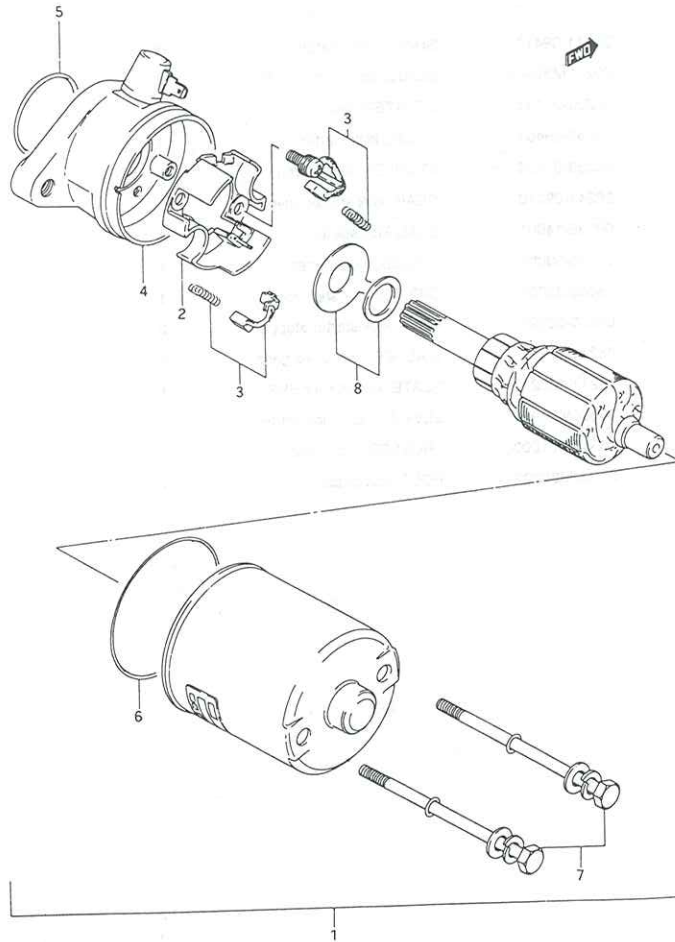
FIG. 16 ( C-11 ) KICK STARTER

REF. NO.	PART NO.	DESCRIPTIONS	Q'TY	REMARK
1	2E211-09410	SHAFT, kick starter	1	
2	26221M30A00	GUIDE, kick starter SPR	1	
3	26231-09401	STARTER, kick	1	
4	26232-09401	GUIDE, kick starter	1	
5	26233-09400	STOPPER, kick starter	1	
6	26241-09410	GEAR, kick starter crive	1	
7	09285-14001	SEAL, kick starter	1	
8	09440-30007	SPRING, kick starter	1	
9	09448-38004	SPRING, kick shaft return	1	
10	01500-06123	BOLT, kick starter stopper	2	
11	08211-14221	WASHER, kick drive gear	1	
12	08211-14321	PLATE, kick starter SPR	1	
13	26300M30A21	LEVER ASSY, kick starter	1	
14	26352M01000	RUBBER, kick pedal	1	
15	01500M06207	BOLT, kick pedal	1	

FIG. 17

FIG. 17 (D-2) STARTER MOTOR

REF. NO.	PART NO.	DESCRIPTIONS	Q'TY	REMARK
1	31100-30D00	MOTOR ASSY, starting	1	
2	31130-35400	.HOLDER SET, brush	1	
3	31131-35400	.BRUSH SET	1	
4	31151-30D00	.HOUSING SET	1	
5	31156-35400	.O RING	1	
6	31158-35400	.O RING	1	
7	31280-31C00	.BOLT SET	1	
8	31170-43400	.SHIM SET	1	



GSX110

FIG. 18

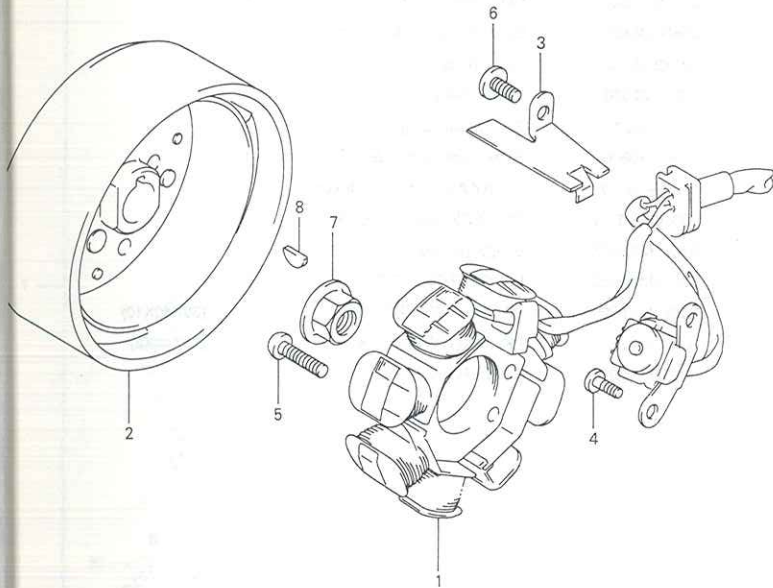


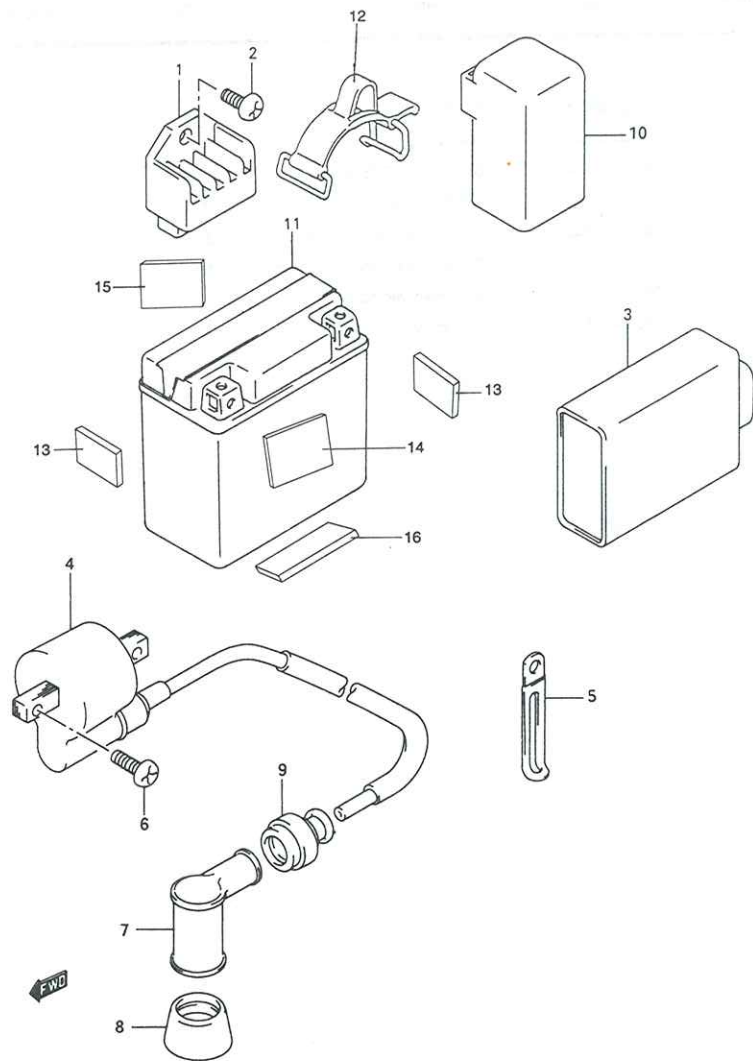
FIG. 18 ( D-3 ) MAGNETO

REF. NO.	PART NO.	DESCRIPTIONS	QTY	REMARK
1	32101-30D00	STATOR ASSY	1	
2	32102-30D00	ROTOR	1	
3	32371-30D00	CLAMP, MAGNETO LEAD	1	
4	02112-05103	SCREW, sensor	2	
5	02112-06203	SCREW, mangneto stator	2	
6	02142-06103	SCREW, magneto lead clamp	1	
7	08316-10123	NUT, magneto rotor	1	
8	08341-31039	KEY, magneto rotor	1	

3

SX110

FIG. 19

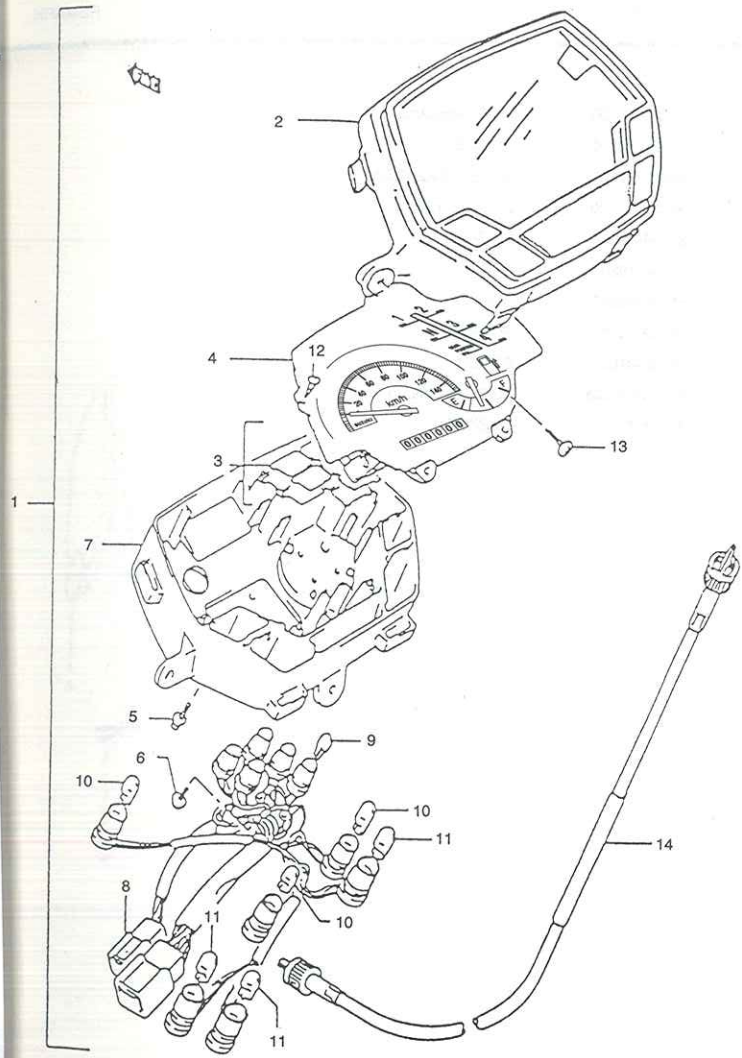


GSX110

FIG. 19 ( D-4 ) ELECTRICAL

REF. NO.	PART NO.	DESCRIPTIONS	QTY	REMARK
1	32800-43E00	RECTIFIER ASSY	1	
2	02112-06123	SCREW	1	
3	32900-30D00	CDI UNIT	1	
4	33410-30D00	COIL ASSY, ignition	1	
5	09404-06429	CLAMP, high tension cord	1	
6	02112-06163	SCREW, ignition coil	2	
7	33510-22010	CAP, spark plug	1	
8	33541-38210	SEAL, spark plug	1	
9	33542-38B00	SEAL, high tension cord	1	
10	31800-19D00	RELAY ASSY, starting motor	1	
11	33610M13E00	BATTERY ASSY (12V, 4AH)	1	
12	33651M31C01	BAND, Battery	1	
13	33652M20C00	PROTECTOR BATT. SIDE	2	
14	33652M31C00A	PROTECTOR BATT. B	1	(30X40X10)
15	33652M41D00	PROTECTOR BATT. A	1	(25X40X2)
16	33652M30D00A	SPACER BATTERY	1	

FIG. 20



GSX110

FIG. 20 ( D-10 ) SPEEDOMETER

REF. NO.	PART NO.	DESCRIPTIONS	Q'TY	REMARKS
1	34100M30D20	SPEEDOMETER ASSY	1	
2	34112M31C00	.CASE, meter upper	1	
3	36300-31831	.LENS SET, pilot	1	
4	34120M32D20	.SPEEDOMETER (kilo)	1	
5	02112-73106	.SCREW	2	
6	34182-12B00	.SCREW	3	
7	34111M31C00	.CASE, meter lower	1	
8	34170-31C00	.SOCKET, meter	1	
9	09471-12100	.BULB (12V, 1.7W)	5	
10	09471-12077	.BULB (12V, 1.7W)	3	
11	09471-12082	.BULB (12V, 3.4W)	3	
12	34148-31C00	.SCREW, speedometer	2	
13	03541-04165	SCREW	3	
14	34910M31C00A	CABLE ASSY, speedometer	1	

3

FIG. 21

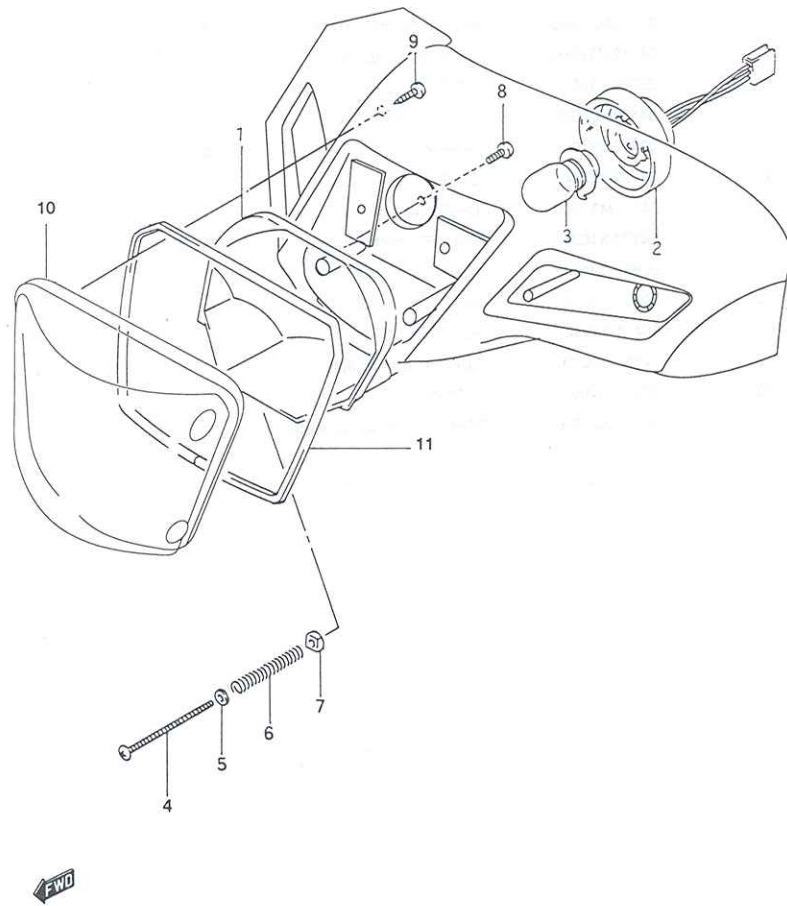
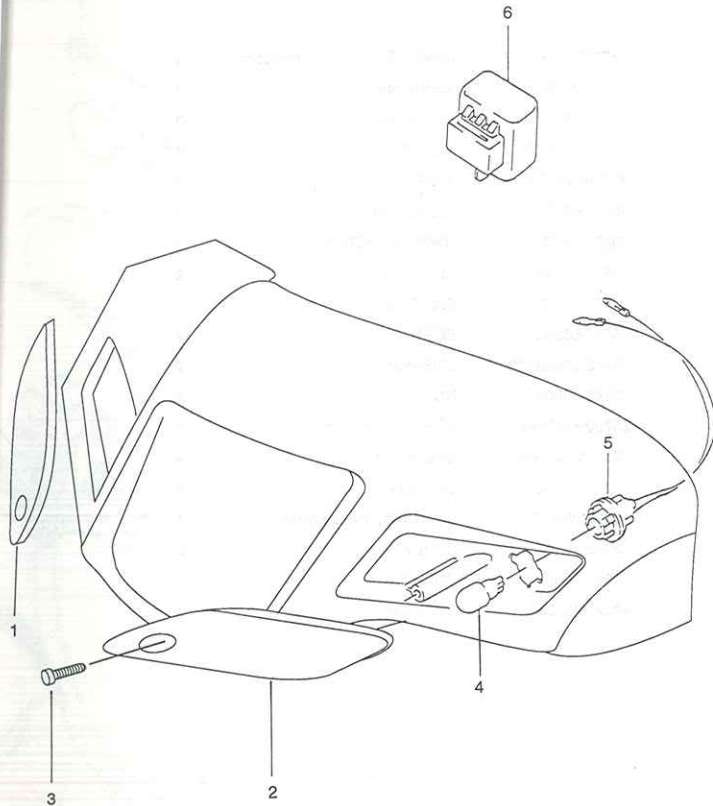


FIG. 21 ( D-5 ) HEADLAMP

REF. NO.	PART NO.	DESCRIPTIONS	QTY	REMARK
1	35120-31C00	UNIT, headlamp	1	
2	35171-37B00	.SOCKET	1	
3	09471-12013	.BULB (12V,25/25W)	1	
4	35151-31C00	SCREW, adjuster	1	
5	35128-37B00	WASHER	1	
6	35154-49200	SPRING	1	
7	35152-45600	NUT	1	
8	02112-05123	SCREW	2	
9	09132-04026	SCREW	4	
10	35124M31C20	LENS, Headlamp	1	
11	35125M31C20	GASKET	1	

GSX110





BSX110

FIG. 22 ( D-6 ) FRONT TURN SIGNAL LAMP

REF. NO.	PART NO.	DESCRIPTIONS	Q'TY	REMARK
1	35612M31C20	LENS, front turn signal lamp RH	1	
2	35632M31C20	LENS, front turn signal lamp LH	1	
3	03511-04163	SCREW	2	
4	09471-12114	BULB (12V, 10W)	2	
5	35618-37B00	SOCKET, front turnsignal	2	
6	38610-09410	RELAY ASSY, turnsignal/buzzer	1	

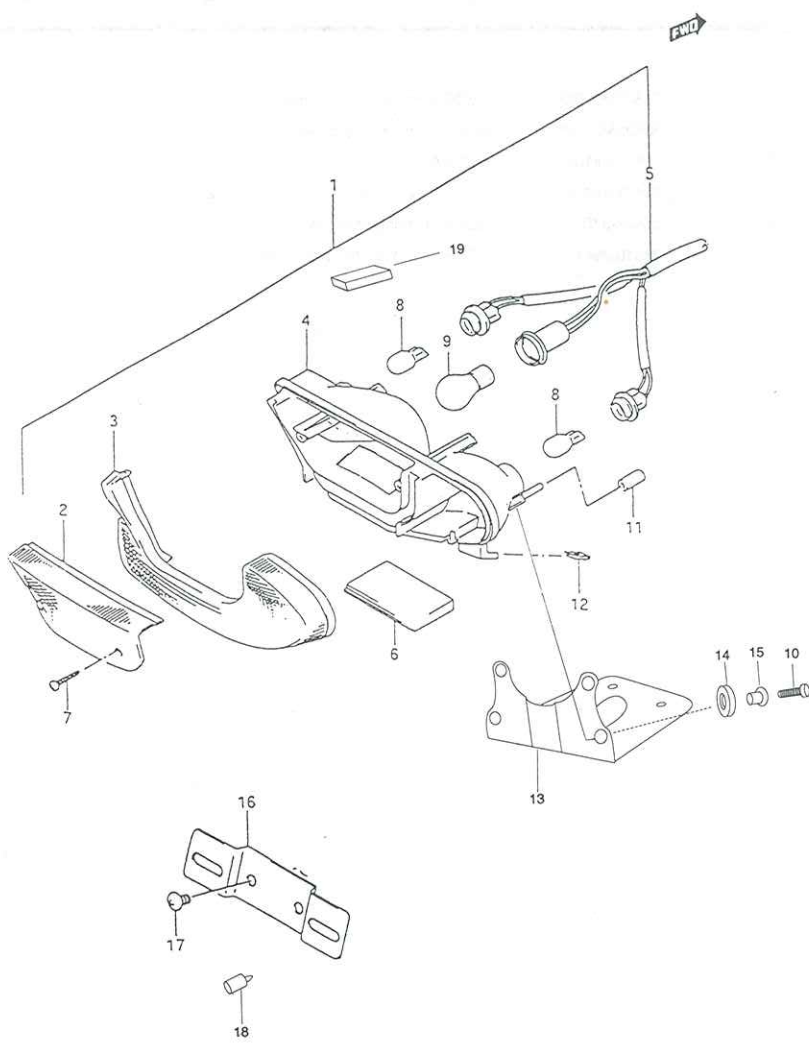
3

FIG. 23

FIG. 23 ( D-7 ) REAR COMBINATION LAMP

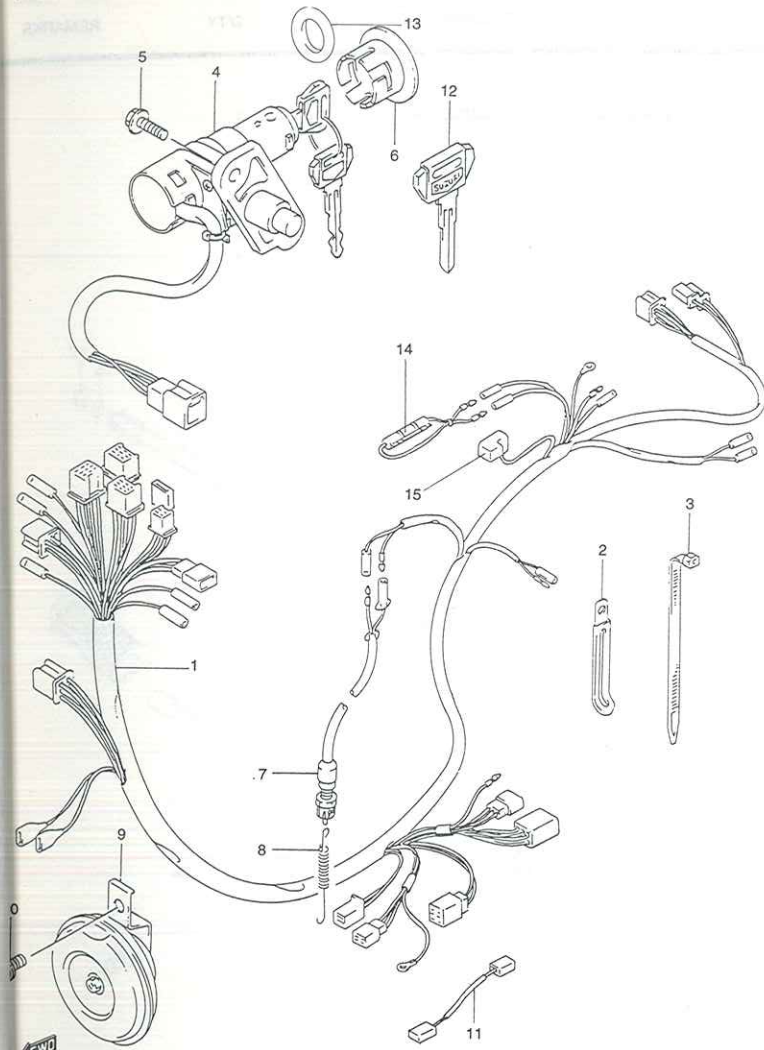
REF. NO.	PART NO.	DESCRIPTIONS	Q'TY	REMARKS
1	35710M21D10	LAMP ASSY, rear combination	1	
2	35712M21D10	.LENS, tail	1	
3	35612M21D10	.LENS, rear turn	1	
4	35715M21D10	.HOUSING	1	
5	35718M21D10	.CORD	1	
6	35912M21D10	.LENS, license	1	
7	03511-04203	.TAPPING SCREW	2	
8	09471-12114	.BULB, turn	2	
9	09471-12127	.BULB, tail	1	
10	03541-05283	SCREW	4	
11	09352-50823-015	CUSHION	2	
12	09148-05004	NUT	8	
13	35730M30D00B	BRACKET, tail lamp	1	
14	09320M30D99A	GROMMET	4	
15	14773M30D00A	SPACER	4	
16	35927M36510	BRACKET, license plate	1	
17	02142-06103	SCREW	2	
18	09321-06013	CUSHION	1	
19	47221M31C00	CUSHION	1	

3



GSX110

FIG. 24



3SX110

FIG. 24 ( D-8 ) WIRING HARNESS

REF. NO.	PART NO.	DESCRIPTIONS	QTY	REMARKS
1	36610M30D90A	HARNESS WIRING	1	
2	09404-06429	CLAMP (L:60)	2	
3-1	09407-18402	CLAMP (L:95)	1	
3-2	09407-25401	CLAMP (L:235)	4	
4	37100-30D20	SWITCH ASSY, ignition	1	
5	01550-06163	SCREW	2	
6	37155M31C00	CAP, steering lock	1	
7	37740-04502	SWITCH ASSY, stop lamp	1	
8	09443-06083	SPRING	1	
9	38500-31C01	HORN ASSY	1	
10	01570-08163	BOLT	1	
11	33810M30D00B	WIRE, starter motor	1	
12-1	37146-03A00	KEY, blank	1	OPT, TYPE
12-2	37146-03A10	KEY, blank	1	OPT, TYPE
12-3	37146-03A20	KEY, blank	1	OPT, TYPE
12-4	37146-03A30	KEY, blank	1	OPT, TYPE
13	37155M31C99A	SPACER	1	
14	09481M10001	FUSE (10A)	1	
15	33624-31C10	CAP, battery terminal	1	

3

FIG. 25

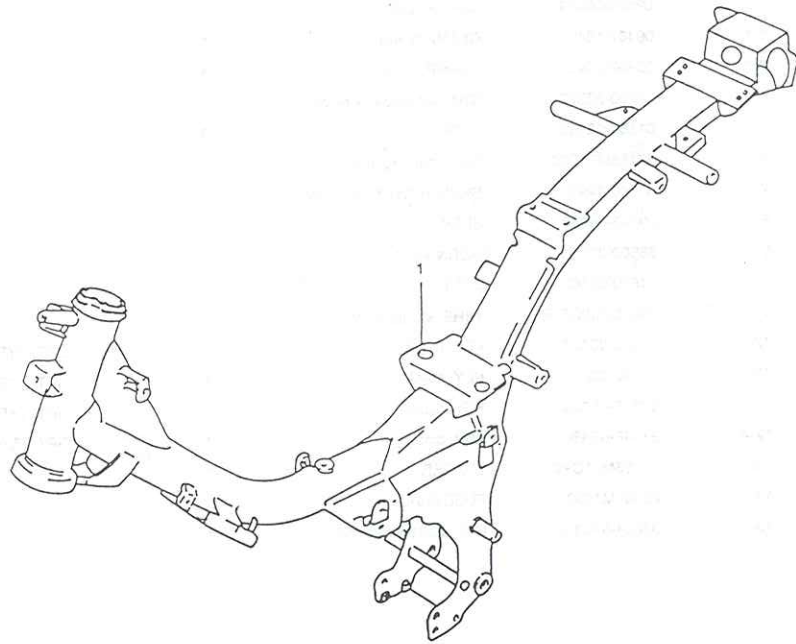
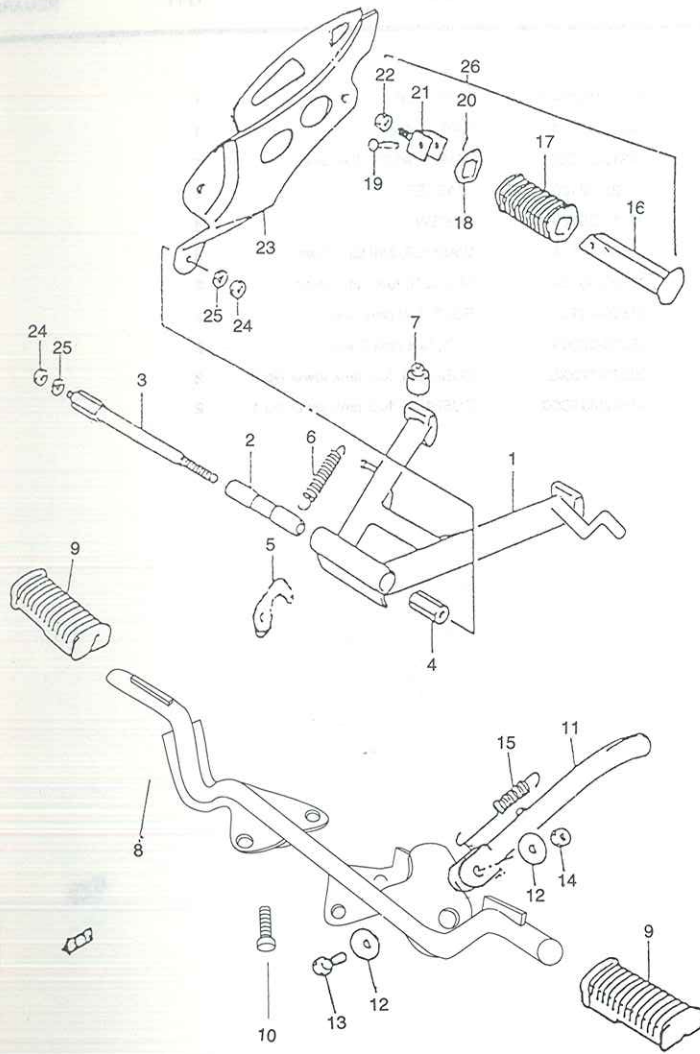


FIG. 25 ( D-2 ) FRAME

REF. NO.	PART NO.	DESCRIPTIONS	Q'TY	REMARKS
1	41100M31C20A	FRAME (Black)	1	

GSX110

FIG. 26



SX110

FIG. 26 STAND-FOOTREST

REF. NO.	PART NO.	DESCRIPTIONS	Q'TY	REMARKS
1	42100M35400	STAND, center	1	
2	42211M03001	SPACER, center stand	1	
3	42221-31C00	BOLT, center stand	1	
4	42231-09000	NUT, center stand	1	
5	42251M03003	HOOK, center stand	1	
6	09443-16007	SPRING, center stand	1	
7	09321M10001	CUSHION, center stand	1	
8	43510M30D00B	BAR COMP. front footrest	1	
9	43551M39110	RUBBER, front footrest	2	
10	01550-08163	BOLT, front footrest bar	4	
11	42310M30DA0B	STAND, comp.prop	1	
12	09160M10048	WASHER	2	
13	09100M10007	BOLT, prop stand	1	
14	09140-10043	NUT, prop stand	1	
15	09443-14022	SPRING, prop stand	1	
16-1	43610M31C99B	BAR, pillion footrest RH	1	
16-2	43620M31C99A	BAR, pillion footrest LH	1	
17	43612M30D00B	RUBBER, pillion footrest	2	
18	43631M39310	WASHER, pillion footrest	2	
19	09200-06043	PIN, pillion footrest	2	
20	04111-20158	PIN, cotter	2	
21	43620M31C99A	HOLDER, pillion footrest	2	
22	09140-10043	NUT, pillion footrest	2	
23-1	43660M30D00D	PLATE, pillion footrest RH	1	
23-2	43760M31D20D	PLATE, pillion footrest LH	1	
24	09140-10043	NUT, pillion footrest, LWR	2	
25	08321-01103	WASHER, pillion footrest, LWR	2	
26-1	43600M39310	FOOTREST ASSY, pillion RH	1	
26-2	43700M39310	FOOTREST ASSY, pillion LH	1	

4

FIG. 27

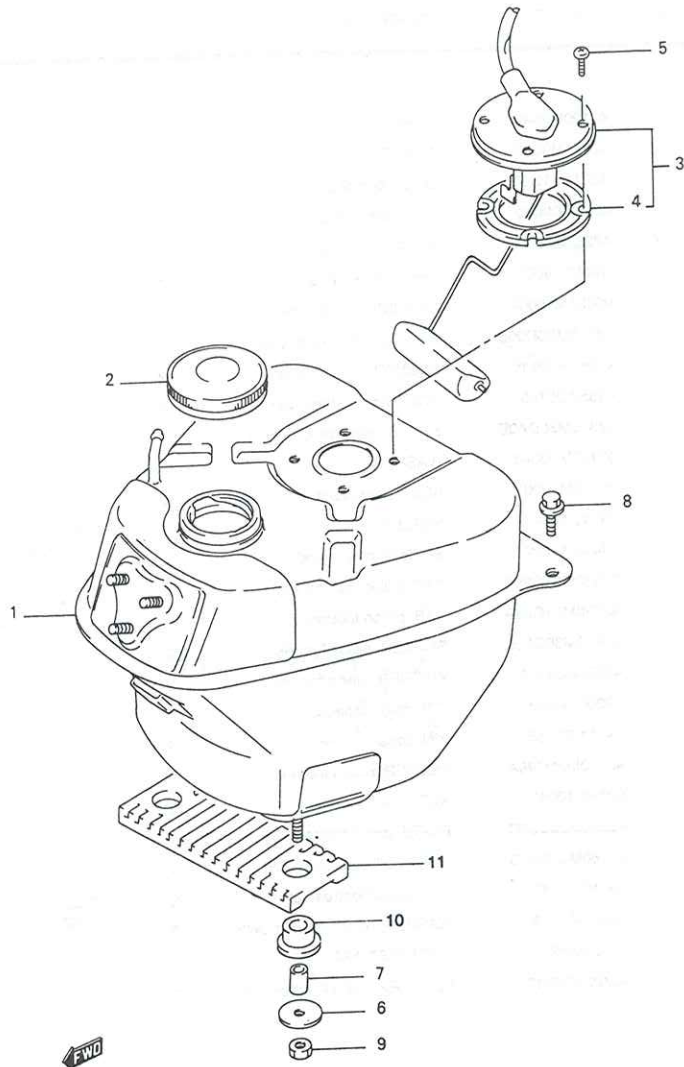


FIG. 27 ( E-4 ) FUEL TANK

REF. NO.	PART NO.	DESCRIPTIONS	Q'TY	REMARKS
1	44110M30DA0	TANK, fuel	1	
2	44210-35014	CAP, fuel tank	1	
3	34810-31C00	GUAGE ASSY, fuel level	1	
4	34825-02100	.GASKET	1	
5	02112-35123	SCREW	4	
6	09160-06114	WASHER, fuel tank lower	2	
7	09180-06169	SPACER, fuel tank lower	2	
8	01550-06163	BOLT, fuel tank rear	2	
9	08310-00063	NUT, fuel tank lower	2	
10	09320M10022	CUSHION, fuel tank lower No.2	2	
11	44542M31C00	CUSHION, fuel tank lower No.1	2	

4

GSX110

FIG. 28

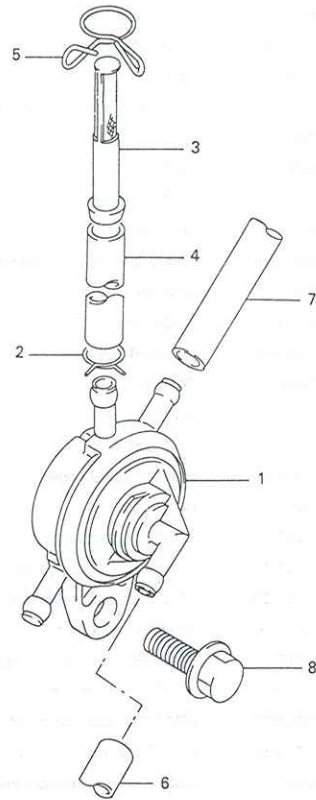


FIG. 28 ( E-5 ) FUEL COCK

REF. NO.	PART NO.	DESCRIPTIONS	Q'TY	REMARKS
1	4430C-11B01	COCK ASSY, fuel	1	
2	09401-C8401	CLIP, fuel hose	7	
3	44322-27001	FILTER, fuel	1	
4	09359-50822-041	HOSE, fuel ON	1	
5	09401-10403	CLIP, fuel ON	1	
6	09352-50823-360	HOSE, fuel	1	
7	09352-50823-550	HOSE, breather	1	
8	01550-06163	BOLT	1	

4

ISX110

FIG. 29

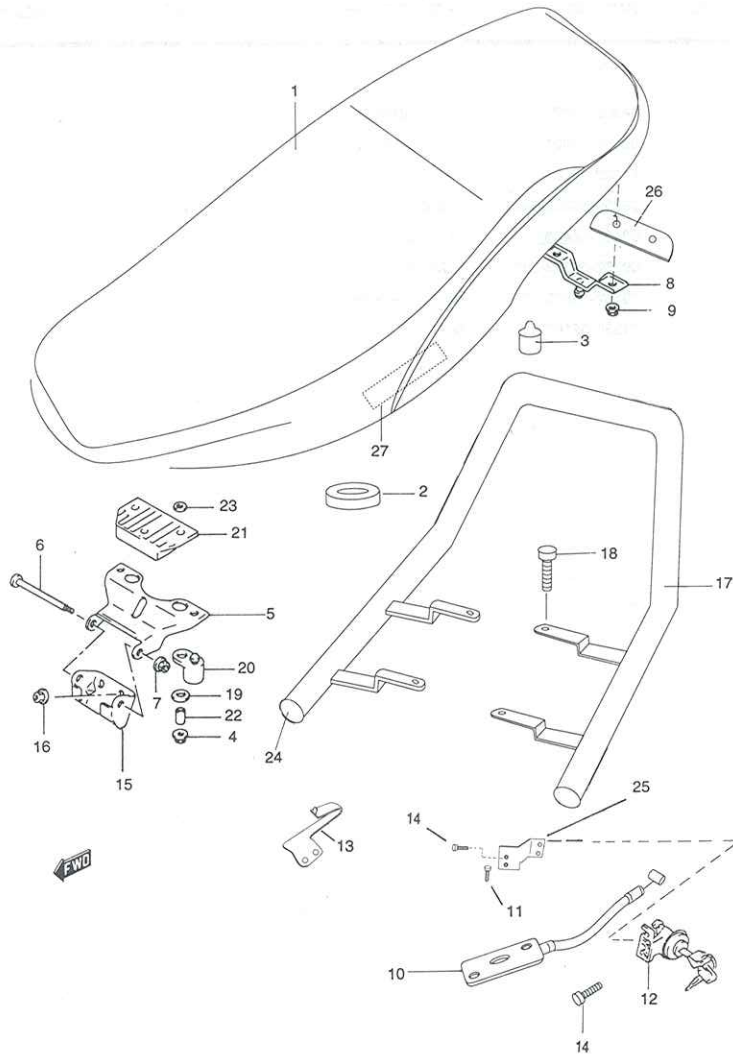


FIG. 29 - SEAT

REF. NO.	PART NO.	DESCRIPTIONS	QTY	REMARKS
1	45100M31C10A	SEAT ASSY	1	
2	09321M14005	CUSHION, FRONT	2	
3	45149M35400	CUSHION, rear	2	
4	08316-20063	NUT	2	
5	45285M31CD0A	BRACKET, seat support front	1	
6	09111-06001	BOLT	1	
7	08361-35066	NUT	1	
8	45210-35420	STRIKER, seat lock	1	
9	08316-20063	NUT, striker	2	
10	45220M31C01A	BRACKET, seat support rear	1	
11	02122-06253	SCREW	2	
12	95700-31C00	LOCK, seat	1	
13	95721M30D00B	HOLDER HELMET	1	
14	02112-75103	SCREW	4	
15	45260M31C00	HOLDER, seat	1	
16	08316-26066	NUT, seat holder	3	
17	46210M30D02A	HANDLE, pillion rider	1	
18	01517-06257	BOLT	4	
19	09160-06039	WASHER, seat brkt lwr	2	
20	45148M31CD0A	CUSHION, seat hinge lwr	2	
21	45149M31CD0B	CUSHION, seat hinge upper	1	
22	09180-06035	SPACER, seat blk fr.	2	
23	08322-01063	WASHER, seat sprt brkt upper	2	
24	09250M14005	PLUG, handle pillion rider	2	
25	45220M30D99B	BRACKET, seat sprt rr ext.	1	
26	41656M30D99A	PLATE Comb. RR Comb.	1	
27	33652M38410	CUSHION, Seat Bottom Plate	1	

4

GSX110



FIG. 30

MARKS

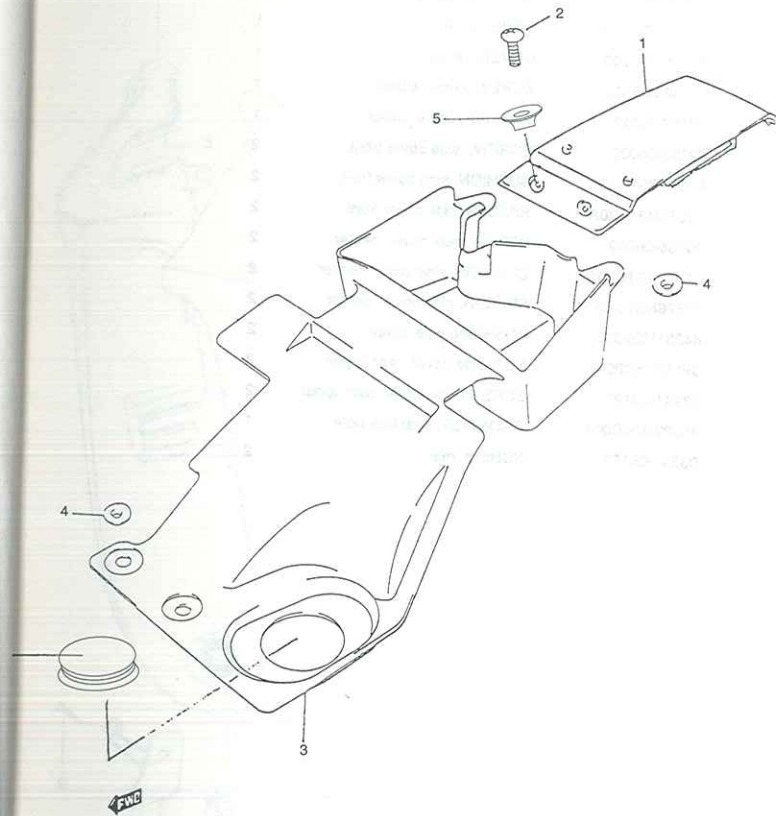


FIG. 30 ( D-9 ) SEAT TAIL COVER

REF. NO.	PART NO.	DESCRIPTIONS	QTY	REMARKS
1	45511M30D00A	COVER, seat tail	1	
2	02147-06163	SCREW, SEAT TAIL COVER	2	
3	47341M31C00B	COVER, upper	1	
4	09169-06041	WASHER, upper cover, front	4	
5	09169-06047	Washer Cover Seat Tail	2	
6	47341M30D99A	CAP, COVER UPPER	1	

4

BSX110

FIG. 31

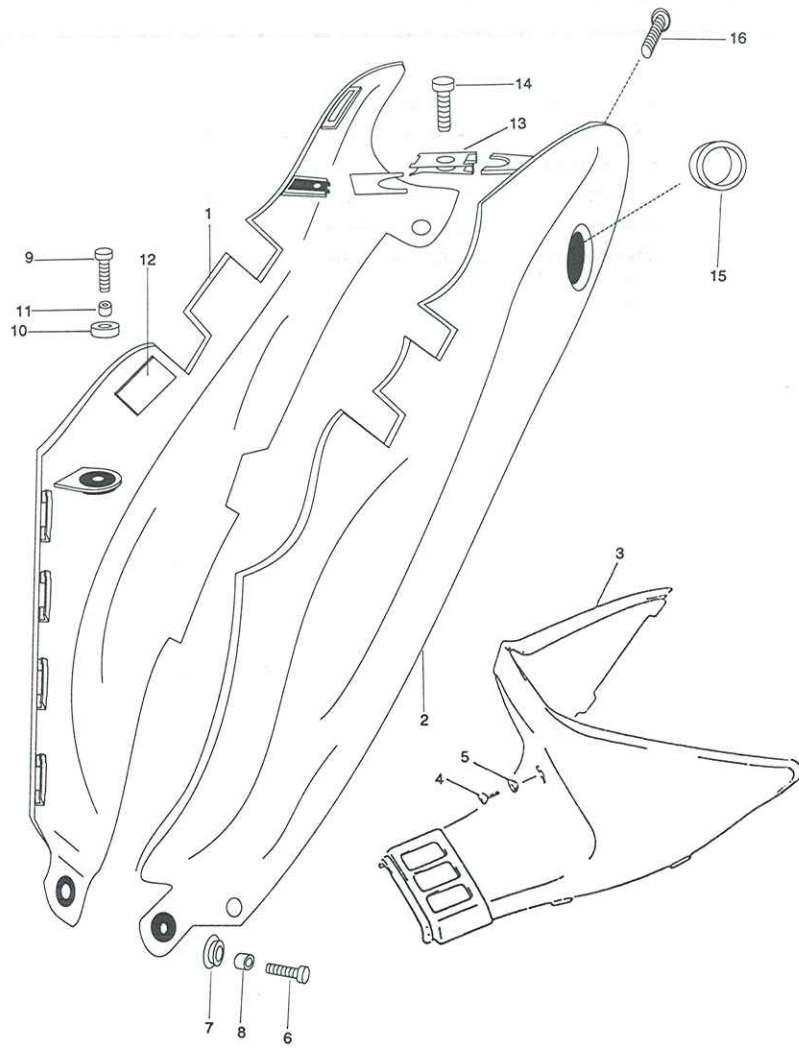


FIG. 31 ( D-10 ) FRAME COVER

REF. NO.	PART NO.	DESCRIPTIONS	Q'TY	REMARKS
1	47111M30D00A	COVER SIDE. R	1	
2	47211M30D00A	COVER SIDE. L	1	
3	47311M31C00	COVER, center	1	
4	02142M05123	SCREW, center cover	1	
5	09169-05012	WASHER, center cover	1	
6	09136-06009	SCREW, side cover front	2	
7	61375M31C20A	CUSHION, side cover front	2	
8	61376M31C20A	SPACER, side cover front	2	
9	09136-06009	SCREW, side cover, center	2	
10	61375M31C20A	CUSHION, side cover, center	2	
11	61376M31C20	SPACER, side cover, center	2	
12	44281M29C00	CUSHION, side cover	2	
13	09148-05020	NUT, side cover, rear upper	2	
14	03241-05123	SCREW, side cover, rear upper	2	
15	45522M30D00A	GROMMET, seat lock hole	1	
16	03241-05163	SCREW, rear	2	

4

GSX110

FIG. 32

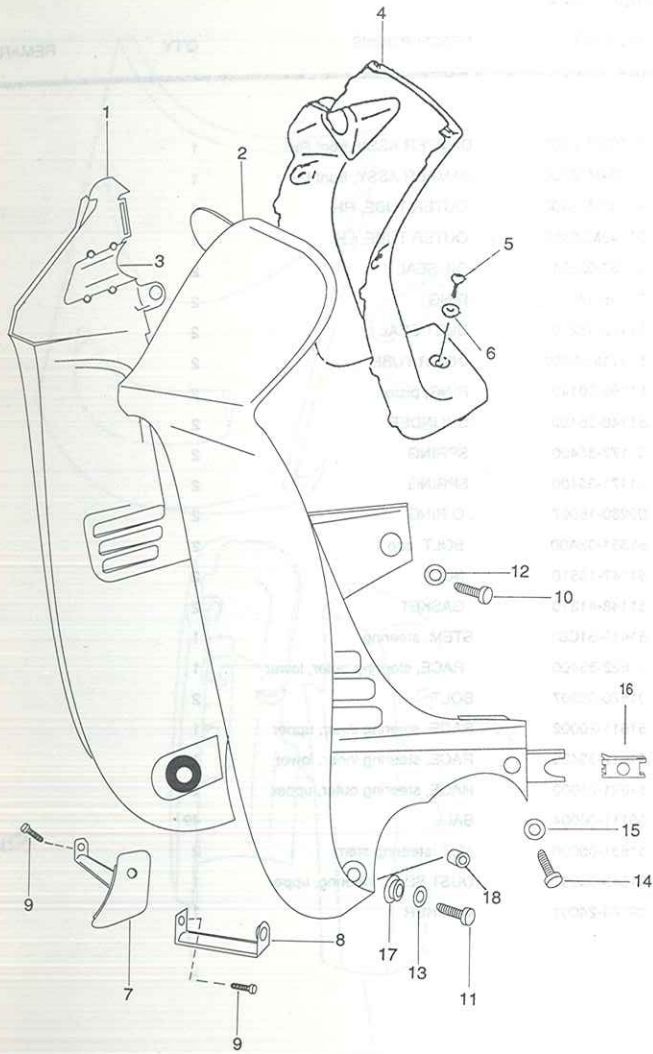


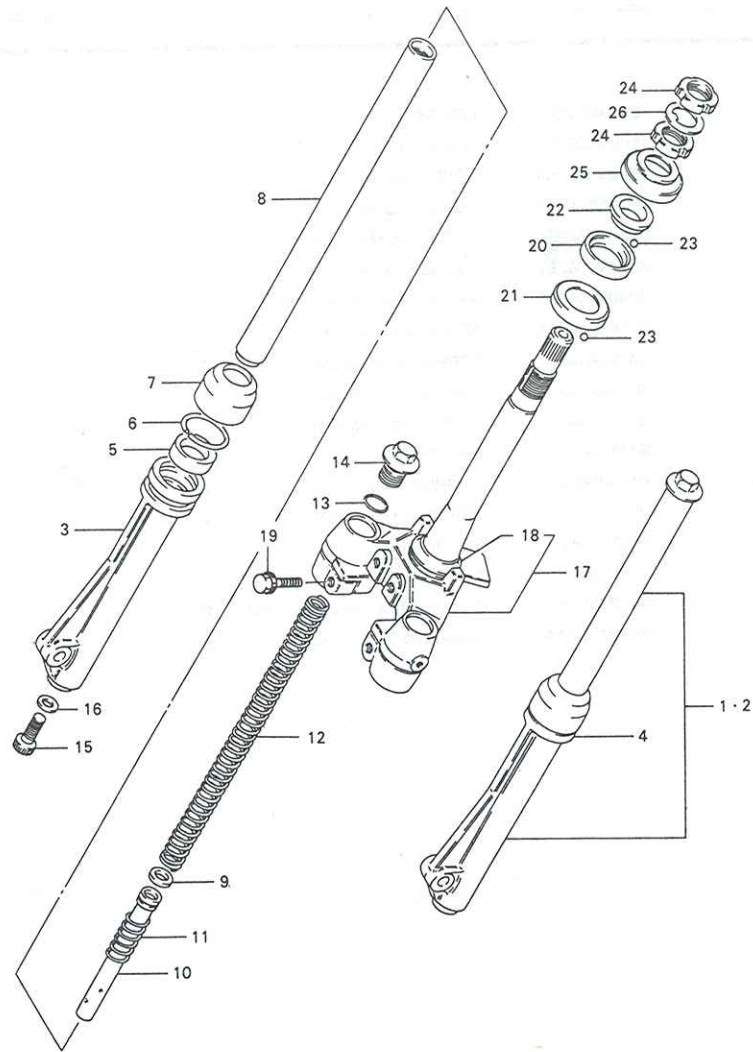
FIG. 32 ( D-11 ) LEG SHIELD

REF. NO.	PART NO.	DESCRIPTIONS	QTY	REMARKS
1	48111M30D00A	LEG SHIELD, R	1	
2	48121M30D00A	LEG SHIELD, L	1	
3	48272M30D00A	COVER, main switch	1	
4	48131M30D00A	LEG SHIELD, center	1	
5	02142M06205	SCREW, leg shield center	1	
6	09169M06052	WASHER, center	1	
7	48140M30D99B	BRACE, comp. leg shield, R	1	
8	48150M30D00A	BRACE, comp. leg shield, L	1	
9	02112-36163	SCREW, leg shield brace	2	
10	09125-06100	SCREW, leg shield front	2	
11	09136-06009	SCREW, leg shield lower	2	
12	09169-06072	WASHER, front	2	
13	09169M06052	WASHER, lower	2	
14	03242-05165	SCREW, leg shield rear	2	
15	09160-05043	WASHER, rear	2	
16	09148-05020	NUT, leg shield rear	2	
17	09320M09026	Cushion, Brace Leg Shield Lower	2	
18	09180M06011A	Spacer Leg Shield Lower	2	

4

SX110

FIG. 33



GSX110

4

FIG. 33 ( F-2 ) FRONT FORK

REF. NO.	PART NO.	DESCRIPTIONS	Q'TY	REMARK
1	51103M35400	DAMPER ASSY, front RH	1	
2	51104M35400	DAMPER ASSY, front LH	1	
3	51130M35400	.OUTER TUBE, RH	1	
4	51140M35400	.OUTER TUBE, LH	1	
5	51153-02501	.OIL SEAL	2	
6	51156-43010	.RING	2	
7	51173-43210	.DUST SEAL	2	
8	51111M35400	.INNER TUBE	2	
9	51196-39140	.RING, piston	2	
10	51146-35420	.CYLINDER	2	
11	51177-35400	.SPRING	2	
12	51171-35400	.SPRING	2	
13	09280-15007	.O RING	2	
14	51351-03A00	.BOLT. cap	2	
15	51147-16510	.BOLT	2	
16	51148-41310	.GASKET	2	
17	51410-31C01	STEM, steering	1	
18	51622-35400	.RACE, steering outer, lower	1	
19	01570-08307	BOLT	2	
20	51611-20002	RACE, steering inner, upper	1	
21	51612-35400	RACE, steering inner, lower	1	
22	51621-25000	RACE, steering outer, upper	1	
23	06111-06004	BALL	49	
24	51631-05000	NUT, steering stem	2	
25	51643-06001	DUST SEAL, steering, upper	1	
26	09166-24001	WASHER	1	

FIG. 34

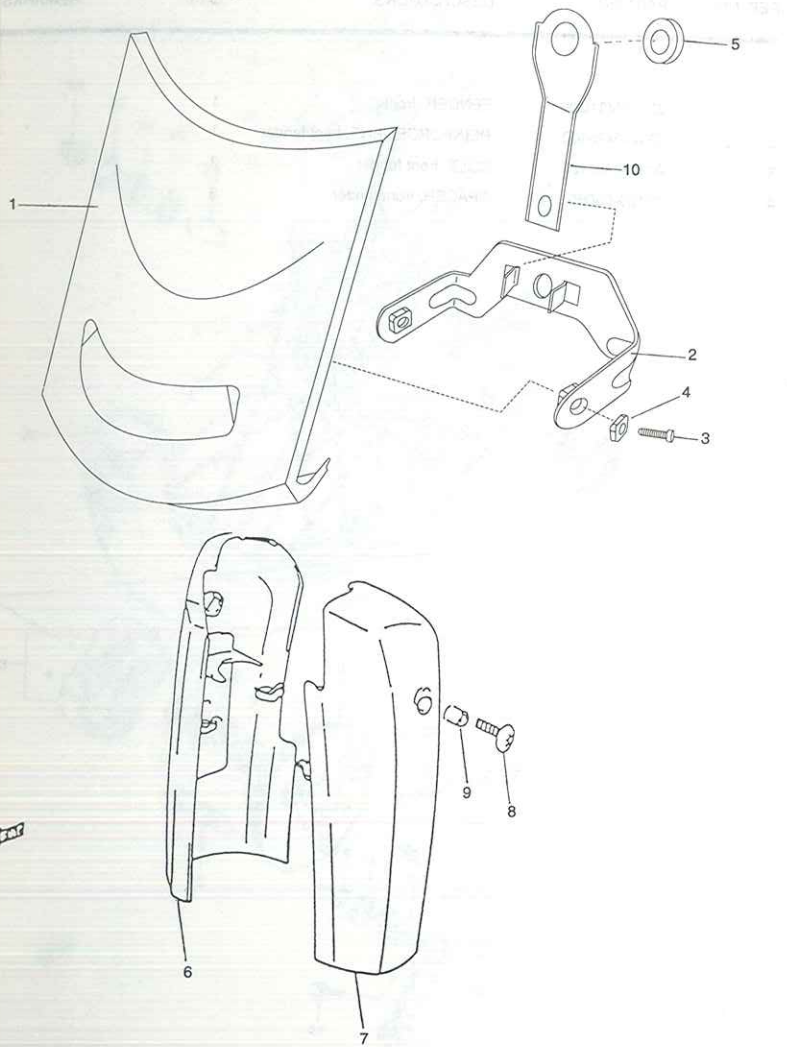


FIG. 34 ( E-3 ) FRONT FORK COVER

REF. NO.	PART NO.	DESCRIPTIONS	Q'TY	REMARKS
1	51871M30D00A	COVER, frame head	1	
2	51862M30D00A	PLATE COMP, frame head cover No.2	1	
3	02142M06167	SCREW, frame head cover	2	
4	09169-06010	WASHER, frame head cover	2	
5	09320-08028	CUSHION, head cover	1	
6	51881M31C10A	COVER, front fork side RH	1	
7	51882M31C10A	COVER, front fork side LH	1	
8	02142M06107	SCREW	2	
9	09180M06089	SPACER	2	
10	51860M30D00A	PLATE COMP, frame head cover	2	

4

GSX110

FIG. 35

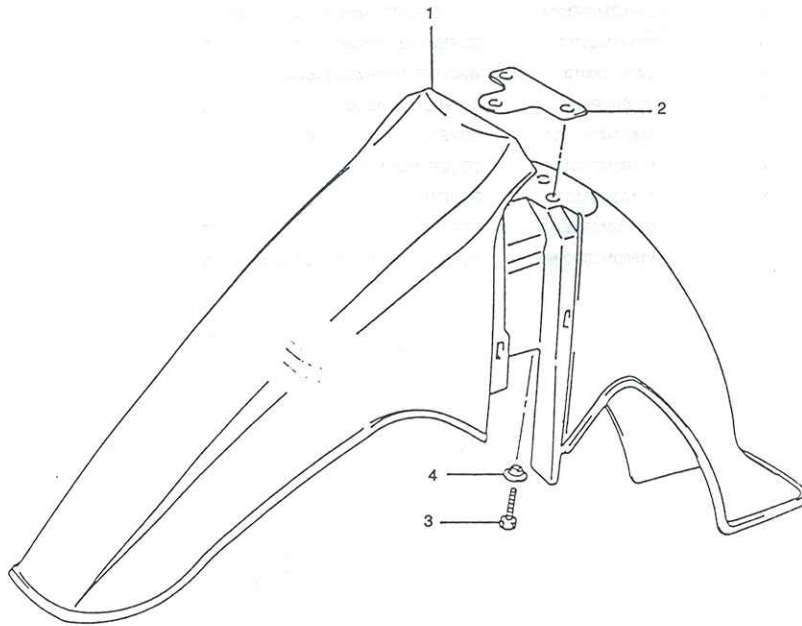


FIG. 35 ( E-4 ) FRONT FENDER

REF. NO.	PART NO.	DESCRIPTIONS	Q'TY	REMARKS
1	53111M31C00A	FENDER, front	1	
2	53124M35400	REINFORCEMENT, front fender	1	
3	01104M06166	BOLT, front fender	3	
4	09169-06060	SPACER, front fender	3	



GSX110

FIG. 36

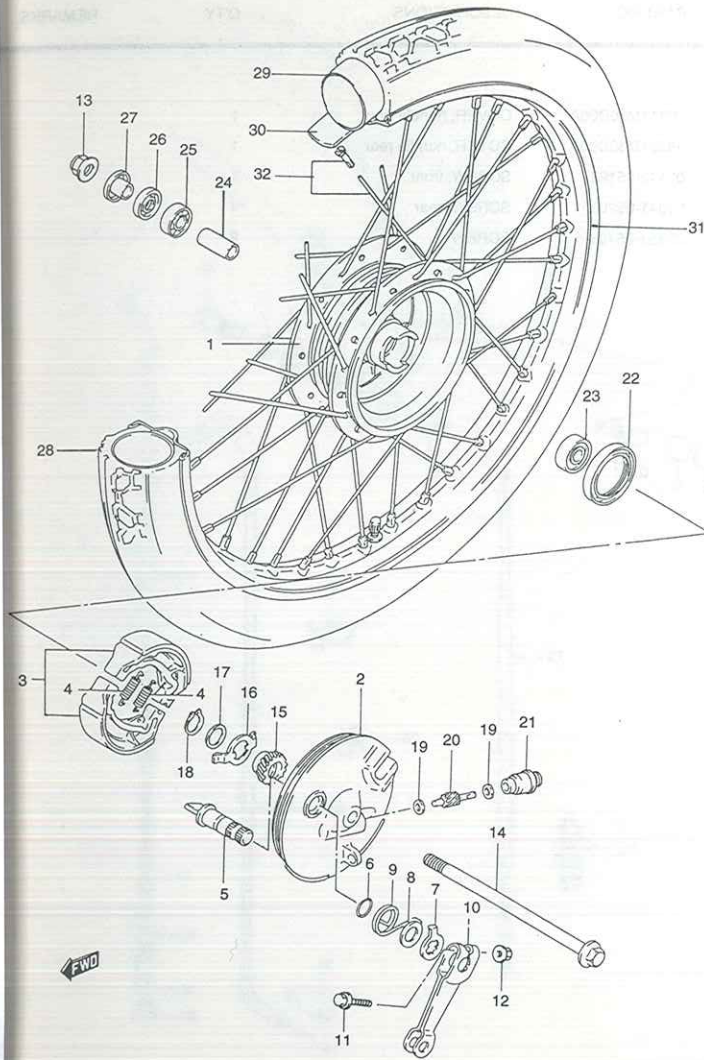


FIG. 36 (E-5) FRONT WHEEL

REF. NO.	PART NO.	DESCRIPTIONS	Q'TY	REMARKS
1	54110M35400	HUB, front wheel	1	
2	54210M35401	PANEL, front hub	1	
3	54400-35860	SHOE, brake	2	
4	09443-07025	SPRING	2	
5	54441-16D00	SHAFT, brake cam	1	
6	09280-14003	O RING	1	
7	54492-35400	PLATE, brake lining	1	
8	09160-14003	WASHER	1	
9	09448-30009	SPRING	1	
10	54451-35400	LEVER, brake cam	1	
11	09103-06045	BOLT	1	
12	08316-10063	NUT	1	
13	08319-31107	NUT	1	
14	54711-35411	AXLE, front	1	
15	54611-03601	GEAR, speedometer (NT:23)	1	
16	54661-03000	DRIVER, speedometer gear	1	
17	09160-16005	WASHER, 16X22X1	1	
18	08331-31156	CIRCLIP	1	
19	09160-05001	WASHER, 5.1X9X0.4	2	
20	54621-23201	PINION, speedometer (NT:10)	1	
21	54632-02201	BUSHING, driven gear outer	1	
22	09285-43001	OIL SEAL	1	
23	08143-63007	BEARING, LH	1	
24	09180-10091	SPACER, bearing	1	
25	08123-62007	BEARING, RH	1	
26	09284-15001	OIL SEAL	1	
27	54740-26100	SPACER, axle RH	1	
28	55100M09401A	TIRE, front, 2.50-17	1	
29	55200M01011	TUBE, Inner	1	
30	55261-01010	PROTECTOR, Inner tube	1	
31	55311M01021A	RIM, wheel 1.40x17	1	
32	55320M01012	SPOKE ASSY, front	1	

4

FIG. 37

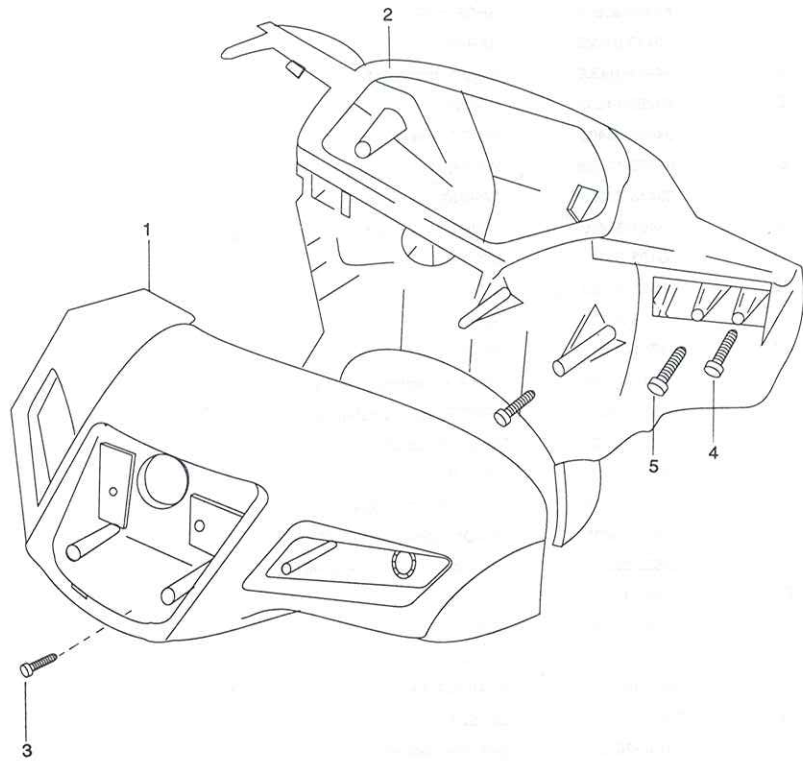


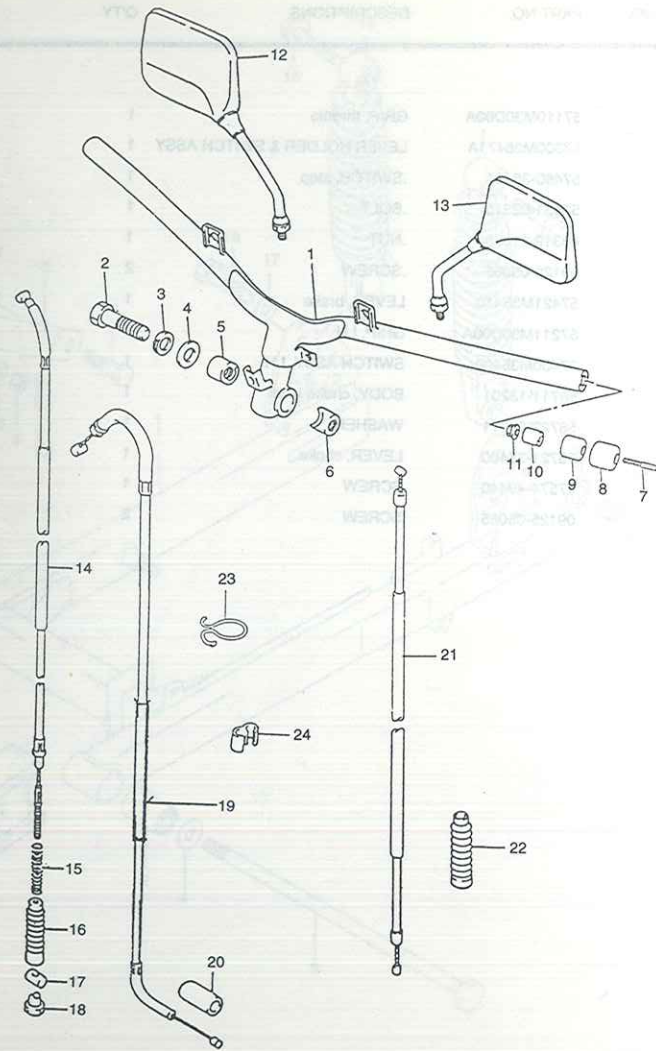
FIG. 37 ( E-7 ) HANDLE COVER

REF. NO.	PART NO.	DESCRIPTIONS	QTY	REMARKS
1	56311M30D00A	COVER, handle front	1	
2	56321M30D00A	COVER, handle rear	1	
3	02142-05123	SCREW, front	1	
4	03541-05203	SCREW, rear	4	
5	03451-05403	SCREW	2	

GSX110



FIG. 38



SX110

FIG. 38 ( E-8 ) HANDLEBAR

REF. NO.	PART NO.	DESCRIPTIONS	Q'TY	REMARKS
1	56110M31C10B	HANDLEBAR	1	
2	09100M12061	BOLT	1	
3	08321-01123	LOCK WASHER	1	
4	08322-01123	WASHER	1	
5	51358-35420	BOLT	1	
6	51359-35410	LOCK WASHER	1	
7	02122-06803	SCREW	2	
8	56278M32E00A	BALANCER	2	
9	56272M31C00	EXPANDER	2	
10	09180-06069	SPACER	2	
11	08316-10063	NUT	2	
12	56500M09C00	MIRROR ASSY, rear view RH	1	
13	56600M09C00	MIRROR ASSY, rear view, LH	1	
14	58110M35411	CABLE ASSY, front brake	1	
15	09440-06003	SPRING	1	
16	09287-07001	DUST SEAL	1	
17	09209-10001	PIN	1	
18	09150-05101	NUT	1	
19	58300M30DA0B	CABLE ASSY, throttle	1	
20	09287-07002	DUST SEAL	1	
21	58410M30D00A	CABLE ASSY, starter	1	
22	58333-35400	DUST SEAL	1	
23	58621-35400	GUIDE, cable	1	
24	09408-00002	CLIP, cable	1	

4

FIG. 39

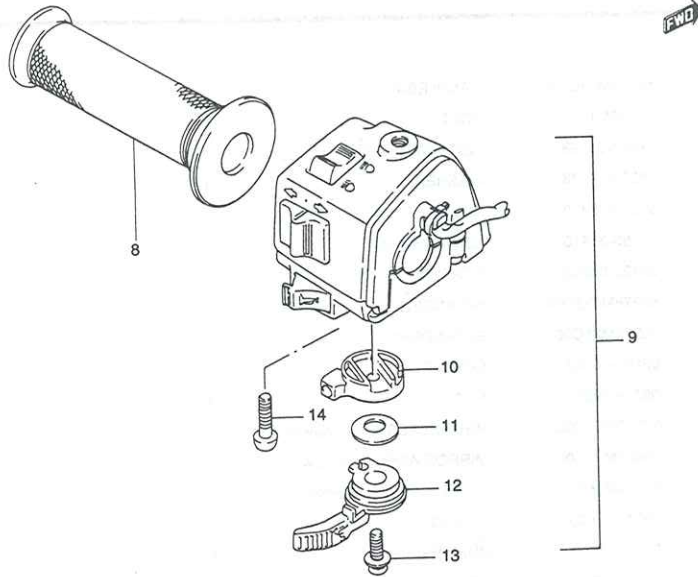
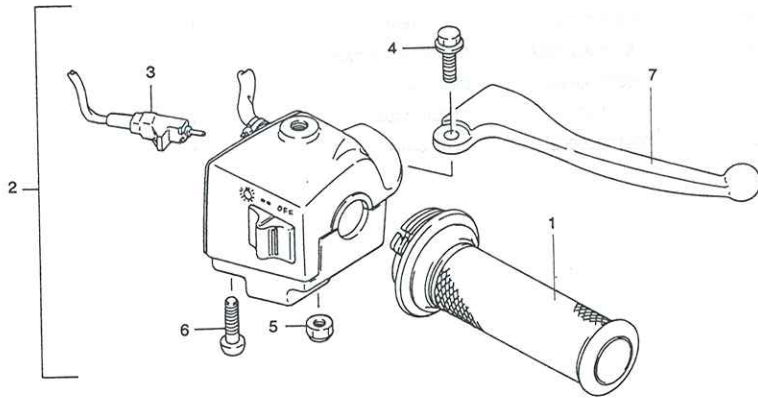


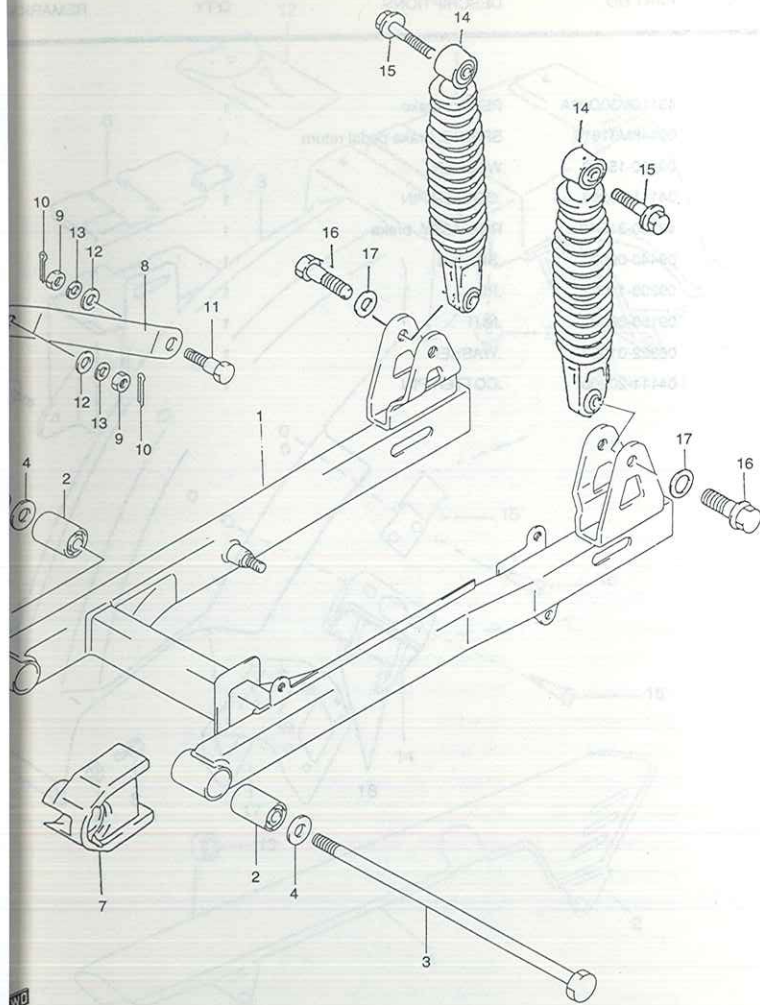
FIG. 39 ( E-9 ) HANDLE SWITCH

REF. NO.	PART NO.	DESCRIPTIONS	Q'TY	REMARKS
1	57110M30D00A	GRIP, throttle	1	
2	57300M35471A	LEVER HOLDER & SWITCH ASSY	1	
3	57460-35401	.SWITCH, stop	1	
4	57431-02910	.BOLT	1	
5	08319-21055	.NUT	1	
6	09125-05065	.SCREW	2	
7	57421M35410	LEVER, brake	1	
8	57211M30D00A	GRIP, LH	1	
9	37400M35400	SWITCH ASSY, LH	1	
10	58711-13201	BODY, choke lever	1	
11	58722-03011	WASHER	1	
12	58721-35400	LEVER, choke	1	
13	37574-49440	SCREW	1	
14	09125-05065	SCREW	2	



GSX110

FIG. 40 ( F-4 ) REAR SWINGING ARM



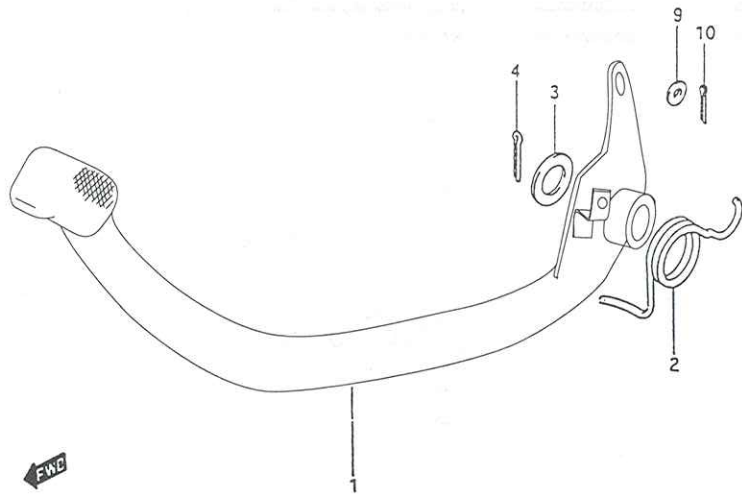
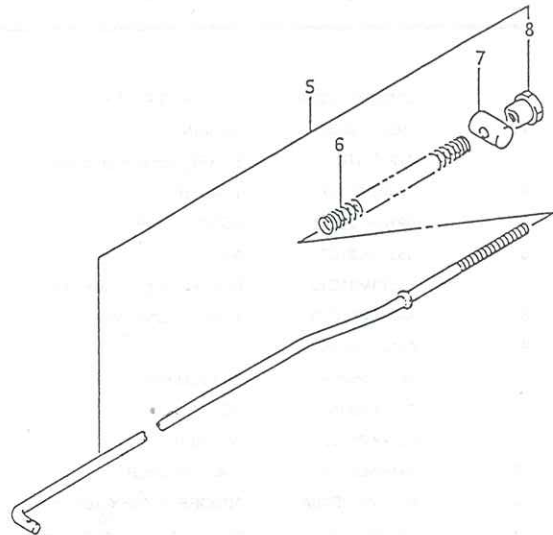
REF. NO.	PART NO.	DESCRIPTIONS	Q'TY	REMARKS
1	61100M31C20A	SWINGING ARM, rear	1	
2	09319-10009	BUSHING	2	
3	61211-31C00	SHAFT, rear swinging arm	1	
4	08322-01107	WASHER	2	
5	09162-10009	LOCK WASHER	1	
6	08310-00107	NUT	1	
7	61273M31C10	BUFFER, chain touch defense	1	
8	64311M31C10	TORQUE LINK, rear	1	
9	09140-08008	NUT	2	
10	04111-20208	COTTER PIN	2	
11	09111-08016	BOLT	1	
12	08322-01083	WASHER	2	
13	09162-08008	LOCK WASHER	2	
14	62100M30D00A	ABSORBER ASSY, rear shock	2	
15	09116M10022	BOLT, shock absorber upper	2	
16	01550M10353	BOLT, shock absorber lower	2	
17	08322M21108	WASHER	2	

4

FIG. 41

FIG. 41 ( E-11 ) REAR BRAKE

REF. NO.	PART NO.	DESCRIPTIONS	Q'TY	REMARKS
1	43110M30D00A	PEDAL, brake	1	
2	09448M31016	SPRING, brake pedal return	1	
3	09160-15002	WASHER	1	
4	04111-30258	.COTTER PIN	1	
5	43300-31C10	ROD ASSY, brake	1	
6	09440-09004	.SPRING	1	
7	09209-11002	.PIN	1	
8	09150-06001	.NUT	1	
9	08322-01053	.WASHER	1	
10	04111-20208	.COTTER PIN	1	



FWC

GSX110

FIG. 42

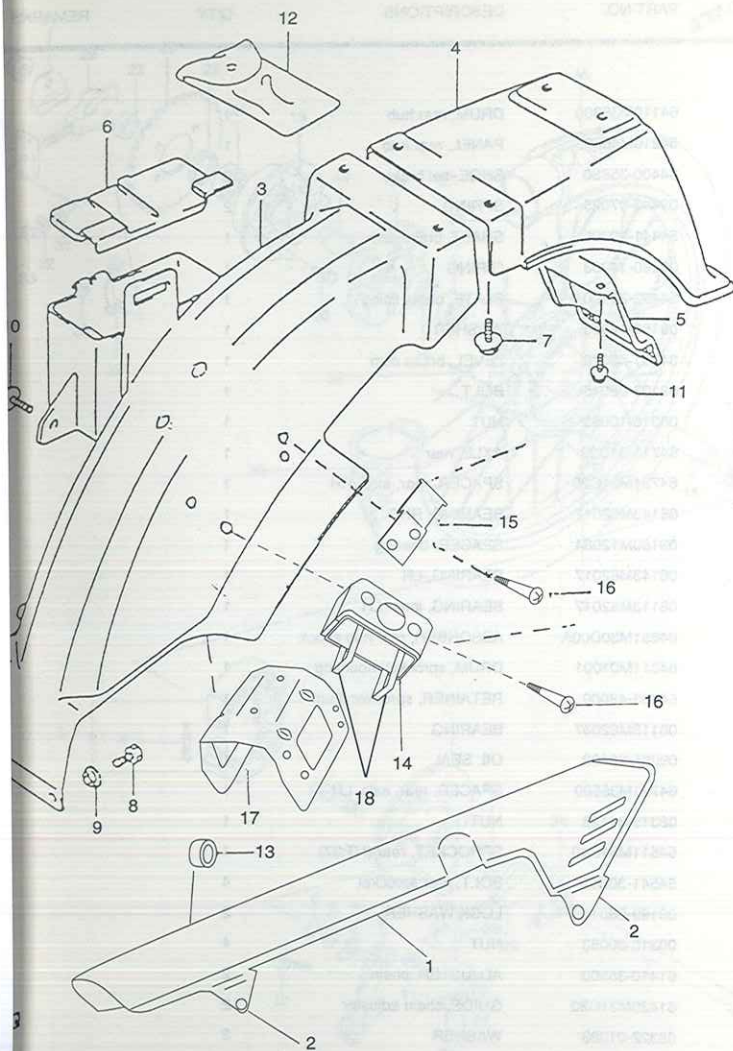


FIG. 42 ( F-4 ) REAR FENDER

REF. NO.	PART NO.	DESCRIPTIONS	Q'TY	REMARKS
1	61310M31C00A	CASE, chain	1	
2	01517M06105	SCREW, chain case	2	
3	63112M31C00D	BODY, rear fender front	1	
4	63113M31C00	FENDER, rear	1	
5	63120M31C00	REINFORCEMENT, rear fender	1	
6	41576M31C00A	COVER, battery	1	
7	09116-06168	BOLT, center (6x16)	2	
8	01550-16123	BOLT, front (6x12)	2	
9	09169-06053	WASHER	2	
10	09116-06168	BOLT, front (6x20)	1	
11	01550M06163	BOLT, rear	2	
12	09800-21004	TOOL ASSY	1	
13	61375M31C20A	CUSHION, chain case	1	
14	32931M30D00A	BRKT CDI UNIT	1	
15	31891M30D00A	BRKT STG MVT RLY	1	
16	05013M04109A	RIVET	6	
17	63112M30D99B	BRACE, Fender Rear Fr	1	
18	32980M30D20	CUSHION CDI Unit	1	

4

SX110

FIG. 43

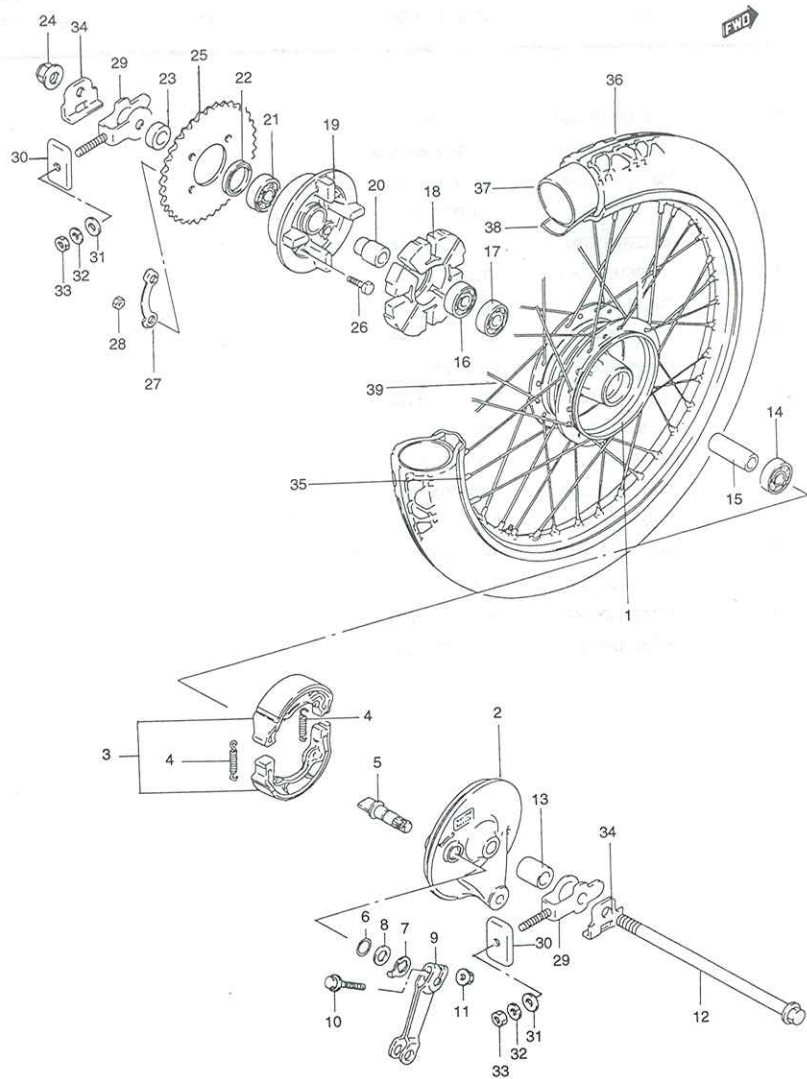


FIG. 43 ( F-7 ) REAR WHEEL

REF. NO.	PART NO.	DESCRIPTIONS	QTY	REMARKS
1	64110M35300	DRUM, rear hub	1	
2	64210M46005	PANEL, rear hub	1	
3	54400-35860	SHOE, set brake	2	
4	09443-07025	SPRING	2	
5	54441-29305	SHAFT, brake cam	1	
6	09280-14003	O RING	1	
7	54492-35400	PLATE, brake lining	1	
8	09160-14003	WASHER	1	
9	64451-43020	LEVEL, brake cam	1	
10	09103-06045	BOLT	1	
11	08316-10063	NUT	1	
12	64711-31C20	AXLE, rear	1	
13	64731M31C20	SPACER, rear, axle, RH	1	
14	08143M62017	BEARING, RH	1	
15	09180M12084	SPACER, bearing	1	
16	08143M62017	BEARING, LH	1	
17	08113M62017	BEARING, inner LH	1	
18	64651M30D00A	ABSORBER, rear hub shock	1	
19	64611M01001	DRUM, sprocket mounting	1	
20	64733-43000	RETAINER, sprocket drum	1	
21	08113M62037	BEARING	1	
22	09285-25003	OIL SEAL	1	
23	64721M35500	SPACER, rear, axle, LH	1	
24	08319-31128	NUT	1	
25	64511M31C40	SPROCKET, rear (NT:37)	1	
26	64541-30D00	BOLT, rear sprocket	4	
27	09169-08011	LOCK WASHER	2	
28	08310-00083	NUT	4	
29	61410-35500	ADJUSTER, chain	2	
30	61420M31C20	GUIDE, chain adjuster	2	
31	08322-01083	WASHER	2	
32	09162-08008	WASHER, lock	2	
33	08310-00083	NUT	2	

GSX110

FIG. 43

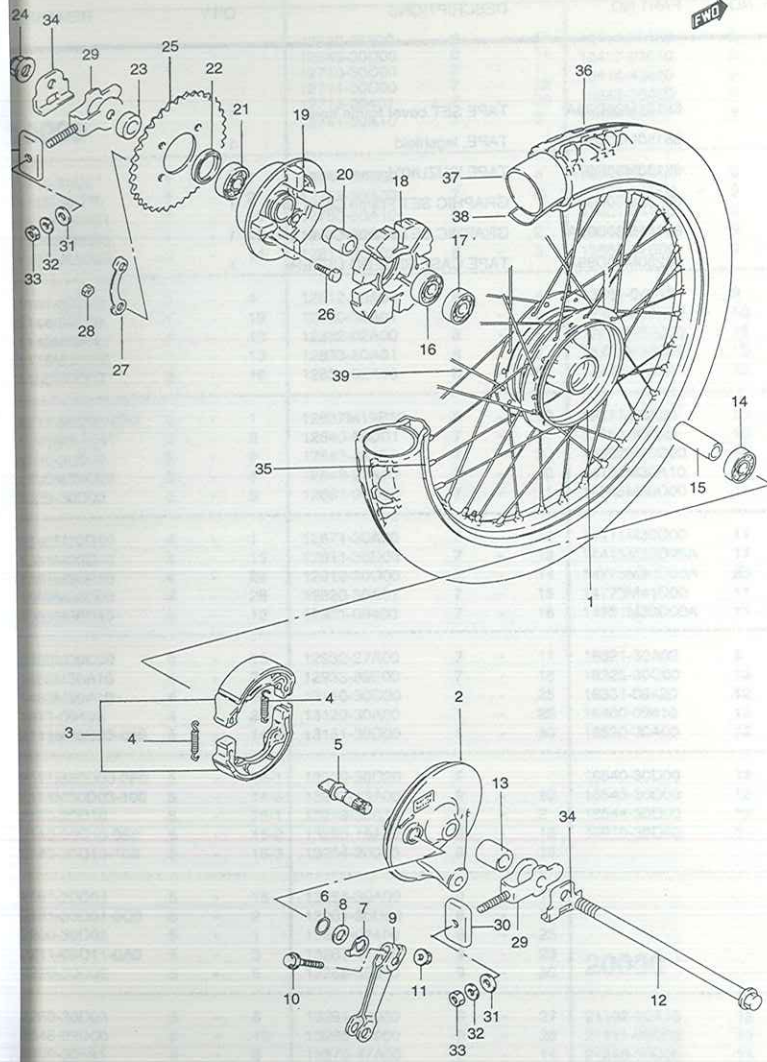
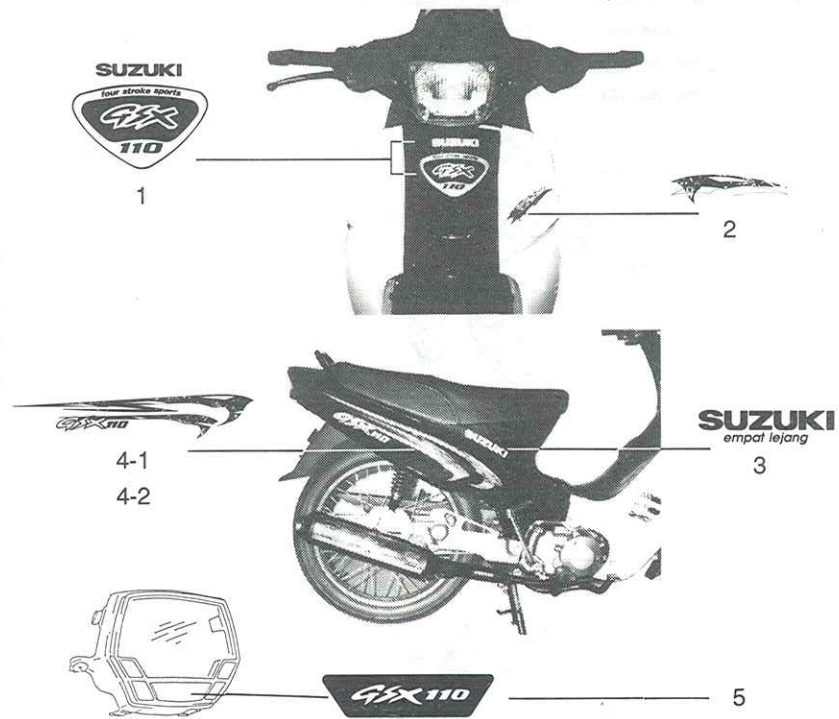


FIG. 43 ( F-7 ) REAR WHEEL

REF. NO.	PART NO.	DESCRIPTIONS	Q'TY	REMARKS
34	64712M20900	WASHER, adjust guide	2	
35	65311M46730	RIM, wheel (1.60x17)	1	
36	65110M31C00A	TIRE (2.75-17-4PR) IRC	1	
37	55200M03600	TUBE ASSY, inner	1	
38	55261M01010	PROTECTOR, inner tube	1	
39	65320M03021	SPOKE SET, rear wheel	1	

4

SX110



REF. NO.	PART NO.	DESCRIPTIONS	QTY	REMARK
1	68191M30D99A	TAPE SET cover frame head	1	
2	68150M30D99A	TAPE, legshield	1	
3	68130M30D97A	TAPE 'SUZUKI' frame cover	2	
4-1	68132M30D99A	GRAPHIC SET Frame Cover RH	1	
4-2	68141M30D99A	GRAPHIC SET Frame Cover LH	1	
5	68280M30D99A	TAPE CASE SPEEDO UPPER	1	

GSX110









PART NO.	FIG. NO.	REF. NO.
09440-30007	16	8
09443-05019	15	21
09443-06053	13	33
09443-06083	24	8
09443-07025	43	4
-----		
09443-07025	36	4
09443-14022	26	15
09443-16007	26	6
09444-25002	15	22
09448-30009	36	9
-----		
09448-38004	16	9
09448M31016	41	2
09471-12013	21	3
09471-12077	20	10
09471-12082	20	11
-----		
09471-12100	20	9
09471-12114	22	4
09471-12114	23	8
09471-12127	23	9
09481M10001	24	14
-----		
09482M00340	1	9
09491-85005	9	12
09492-17012	9	16
09493-26007	13	20
09494-00887	9	11
-----		
09800-21004	42	12

5